



# Washington, D.C. Metropolitan Area Foreclosure Monitor: County Profiles



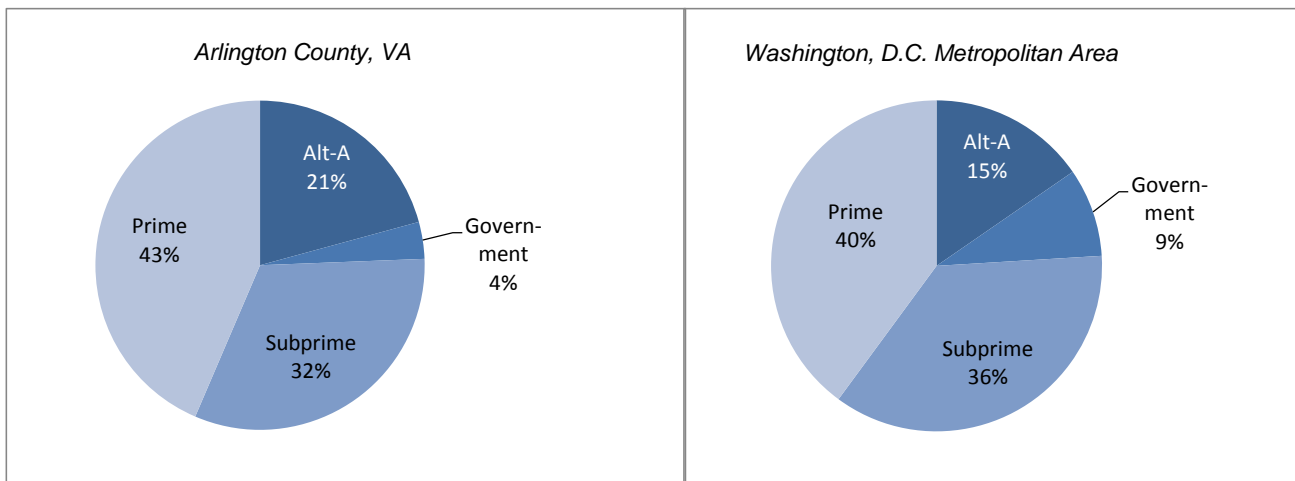
## Arlington County, VA September 2010

### Key Mortgage Performance Indicators

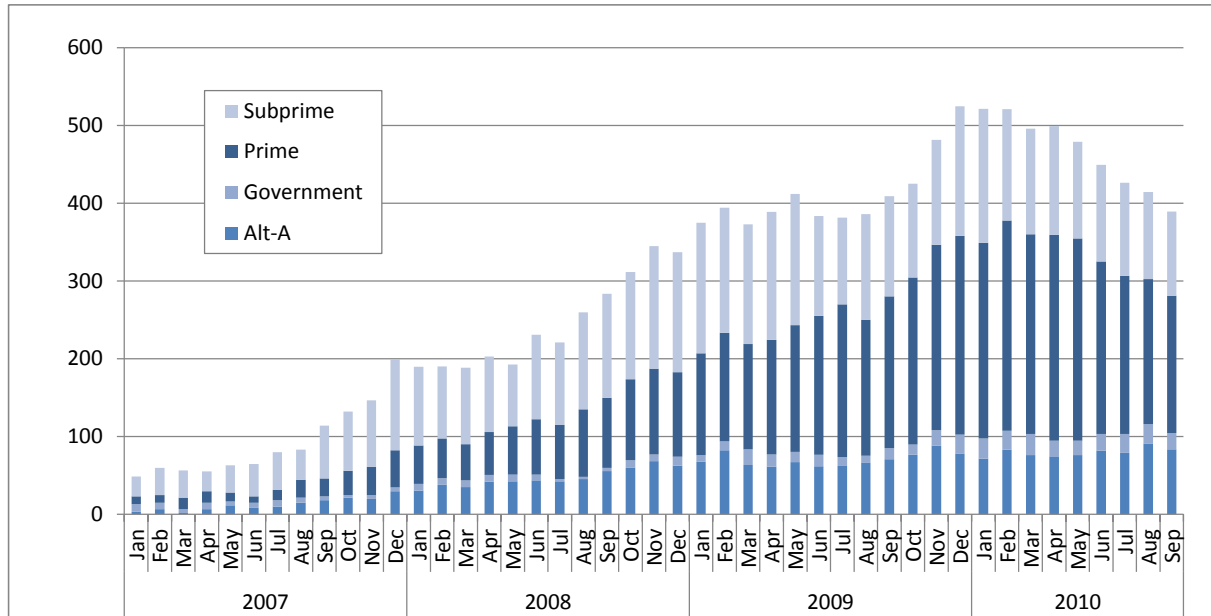
September 2010	Arlington County, VA	Washington, D.C. Metropolitan Area
<b>Foreclosure Inventory</b>		
Number of Loans	300	27,700
Percent of Loans	0.6	2.3
<b>Mortgages 30 or More Days Delinquent</b>		
Number of Loans	1,000	98,700
Percent of Loans	2.2	8.1
Pct. Point Change Since 9/2009	-0.1	-0.4
Pct. Point Change Since 9/2008	0.4	1.7
<b>Mortgages 90 or More Days Delinquent</b>		
Number of Loans	400	50,900
Percent of Loans	0.9	4.2
Pct. Point Change Since 9/2009	-0.1	-0.1
Pct. Point Change Since 9/2008	0.2	1.8
<b>ZIP Codes with High/Highest REO Risk</b>		
Number of ZIP Codes	0	91
Percent of ZIP Codes	0.0	38.7

*Note: Number of loans rounded to the nearest hundred*

### Foreclosure Inventory by Loan Grade, September 2010



**Number of First-lien Mortgages 90 or More Days Delinquent, Arlington County, VA**



Seriously delinquent mortgages are those that are 90 days or more past due and not in the foreclosure inventory. Only areas with more than 500 loans are included in the delinquency analysis. See the *Foreclosure Monitor Technical Appendix* for details about the indicator.

ARLINGTON COUNTY, VA TOP ZIP CODES BY SERIOUS DELINQUENCY RATE September 2010		
ZIP Code	Area	Percent
	<i>Arlington County, VA</i>	0.9
	<i>Metropolitan Area</i>	4.2
22204	Arlington	1.9
22206	Arlington	1.1
22213	Arlington	1.0
22203	Arlington	0.7
22205	Arlington	0.6
22207	Arlington	0.6
22202	Arlington	0.5
22209	Arlington	0.5
22201	Arlington	0.3

Data presented for real estate owned (REO) properties compare the relative rate of REO in a ZIP code with the average REO Rate in all ZIP codes. Only areas with more than 500 loans are included in the REO analysis. See the *Foreclosure Monitor Technical Appendix* for details about the indicator.

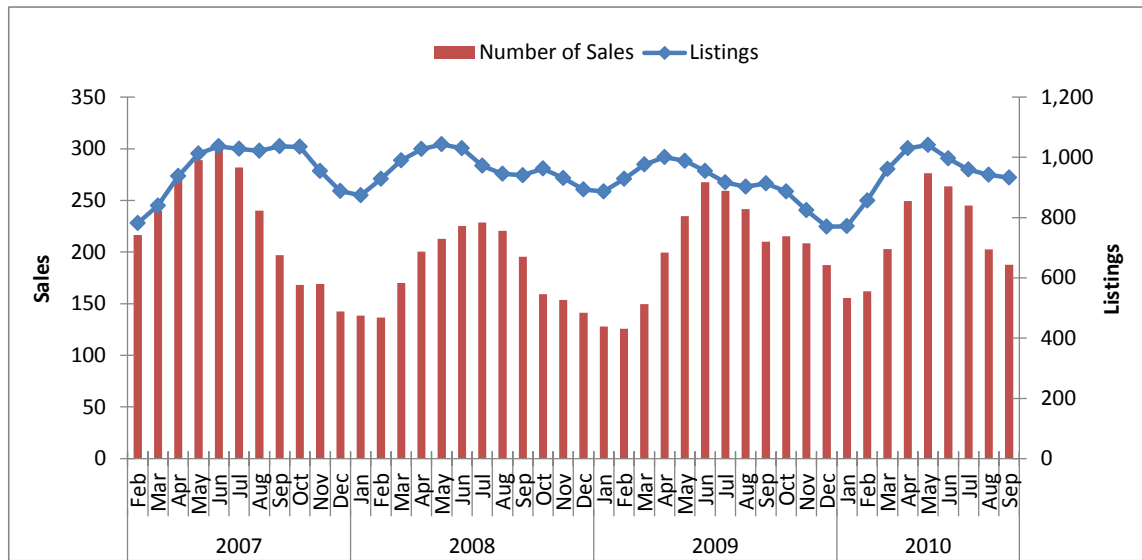
ARLINGTON COUNTY, VA TOP ZIP CODES BY HIGH/HIGHEST REO RISK September 2010		
ZIP Code	Area	Risk Level
22206	Arlington	Minimal
22209	Arlington	Minimal
22204	Arlington	Minimal
22202	Arlington	Minimal
22203	Arlington	Minimal
22201	Arlington	Minimal
22207	Arlington	Minimal
22205	Arlington	Minimal
22213	Arlington	Minimal

#### Key Sales Market Indicators, Arlington County, VA

	September				Percent Change (%)		
	2000	2007	2009	2010	2000-10	2007-10	2009-10
Number of Sales							
County	259	182	221	174	-32.8	-4.4	-21.3
Metro Area	6,810	3,839	5,782	4,921	-27.7	28.2	-14.9
Median Sales Price							
County	\$248,611	\$487,111	\$426,900	\$460,750	85.3	-5.4	7.9
Metro Area	\$216,351	\$404,077	\$310,034	\$311,443	44.0	-22.9	0.5
Pct. Of Home Sales with 90+ days on market							
County	4	24	21	22	480.5	-7.3	7.7
Metro Area	15	40	27	23	57.3	-42.0	-13.3
Number of New Listings							
County	292	412	351	384	31.5	-6.8	9.4
Metro Area	8,062	12,458	9,593	9,746	20.9	-21.8	1.6
Number of Listings							
County	361	1,063	907	957	165.1	-10.0	5.5
Metro Area	17,260	48,580	33,181	34,856	101.9	-28.3	5.0
Months of Inventory							
County	1.4	5.8	4.1	5.5	294.6	-5.8	34.0
Metro Area	2.5	12.7	5.7	7.1	179.5	-44.0	23.4

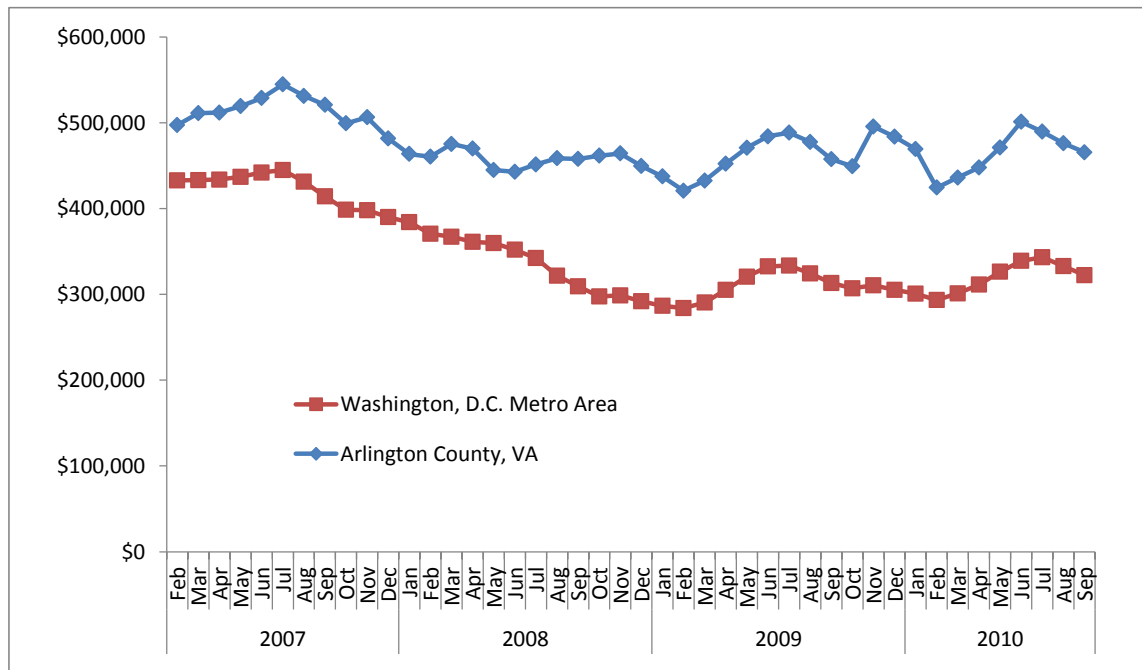
Note: Sales data included in the table above and following charts are for single-family homes and condominium units.

**Sales Market Activity: Three-Month Averages, Arlington County, VA**



**Adjusted Median Sales Price: Three-Month Averages, Arlington County, VA and Metro Area**

Prices in September 2010 dollars



This publication was funded through a grant from Fannie Mae. Electronic versions of the Foreclosure Monitor and its Technical Appendix are available online at [www.mwcog.org](http://www.mwcog.org) and [www.NeighborhoodInfoDC.org](http://www.NeighborhoodInfoDC.org). To learn more about foreclosure prevention activities in the region, visit the Capital Area Foreclosure Network (CAFN) at [www.CAFN.org](http://www.CAFN.org).

*The views expressed are those of the authors and should not be attributed to the Urban Institute, Metropolitan Washington Council of Governments, Fannie Mae, their trustees, or their funders.*