



# Washington, D.C. Metropolitan Area Foreclosure Monitor: County Profiles



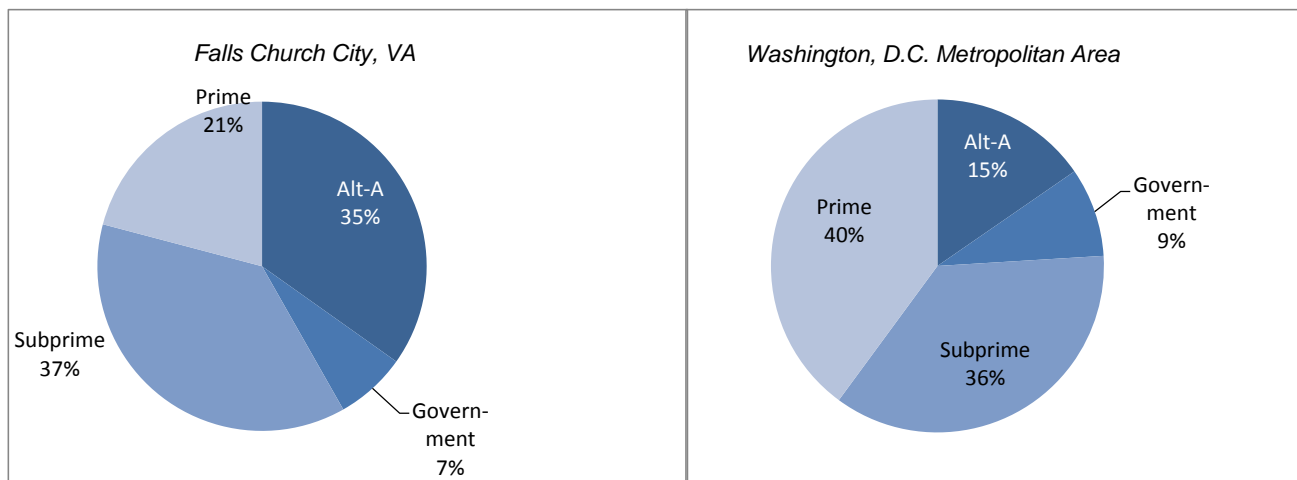
## Falls Church City, VA September 2010

### Key Mortgage Performance Indicators

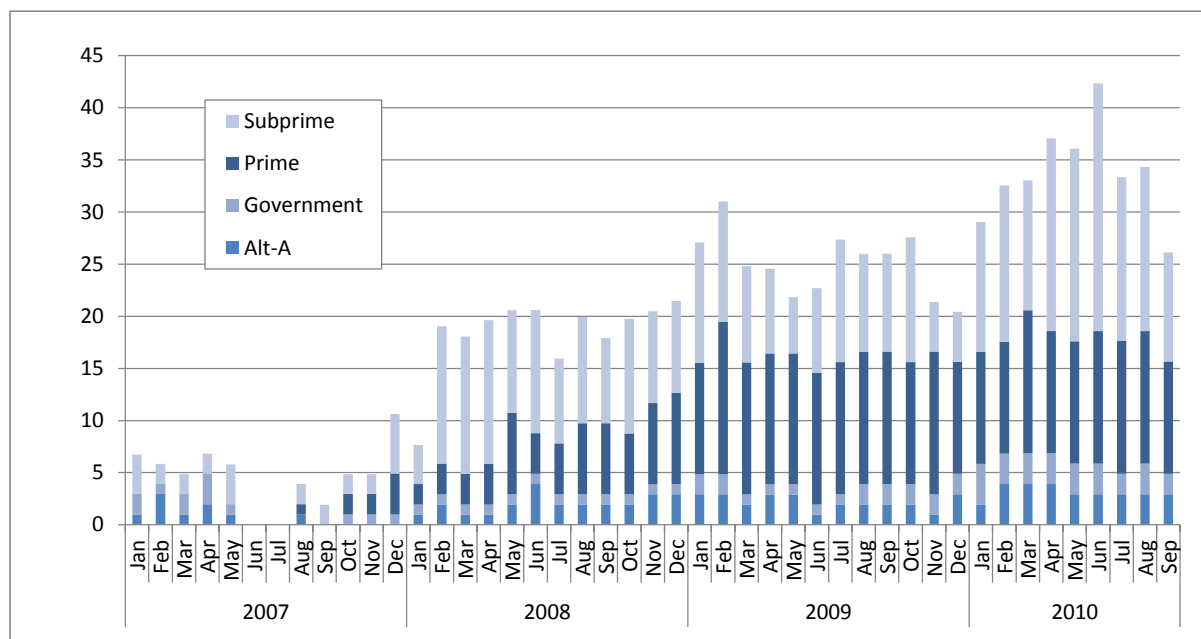
September 2010	Falls Church City, VA	Washington, D.C. Metropolitan Area
<b>Foreclosure Inventory</b>		
Number of Loans	Fewer than 50	27,700
Percent of Loans	0.5	2.3
<b>Mortgages 30 or More Days Delinquent</b>		
Number of Loans	100	98,700
Percent of Loans	2.3	8.1
Pct. Point Change Since 9/2009	-0.1	-0.4
Pct. Point Change Since 9/2008	1.0	1.7
<b>Mortgages 90 or More Days Delinquent</b>		
Number of Loans	0	50,900
Percent of Loans	1.0	4.2
Pct. Point Change Since 9/2009	0.0	-0.1
Pct. Point Change Since 9/2008	0.3	1.8
<b>ZIP Codes with High/Highest REO Risk</b>		
Number of ZIP Codes	0	91
Percent of ZIP codes	0.0	38.7

*Note: Number of loans rounded to the nearest hundred*

### Foreclosure Inventory by Loan Grade, September 2010



**Number of First-lien Mortgages 90 or More Days Delinquent, Falls Church City, VA**

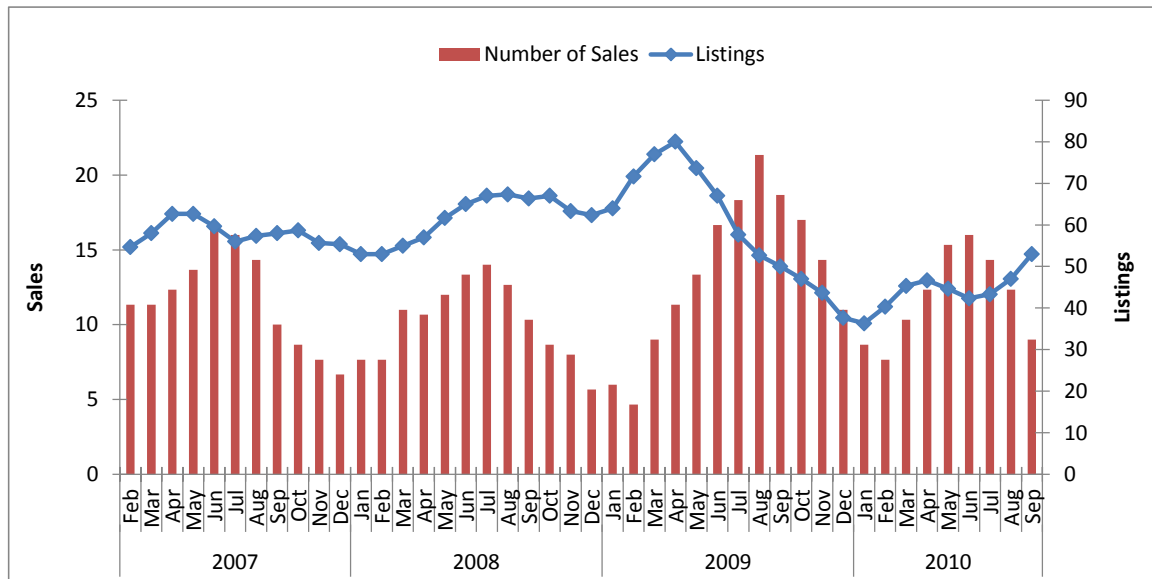


**Key Sales Market Indicators, Falls Church City, VA**

	September				Percent Change (%)		
	2000	2007	2009	2010	2000-10	2007-10	2009-10
<b>Number of Sales</b>							
County	12	14	20	12	0.0	-14.3	-40.0
Metro Area	6,810	3,839	5,782	4,921	-27.7	28.2	-14.9
<b>Median Sales Price</b>							
County	\$306,079	\$589,187	\$569,030	\$486,750	59.0	-17.4	-14.5
Metro Area	\$216,351	\$404,077	\$310,034	\$311,443	44.0	-22.9	0.5
<b>Pct. Of Home Sales with 90+ days on market</b>							
County	8	14	30	25	200.0	75.0	-16.7
Metro Area	15	40	27	23	57.3	-42.0	-13.3
<b>Number of New Listings</b>							
County	15	20	18	22	46.7	10.0	22.2
Metro Area	8,062	12,458	9,593	9,746	20.9	-21.8	1.6
<b>Number of Listings</b>							
County	29	63	47	54	86.2	-14.3	14.9
Metro Area	17,260	48,580	33,181	34,856	101.9	-28.3	5.0
<b>Months of Inventory</b>							
County	2.4	4.5	2.4	4.5	86.2	0.0	91.5
Metro Area	2.5	12.7	5.7	7.1	179.5	-44.0	23.4

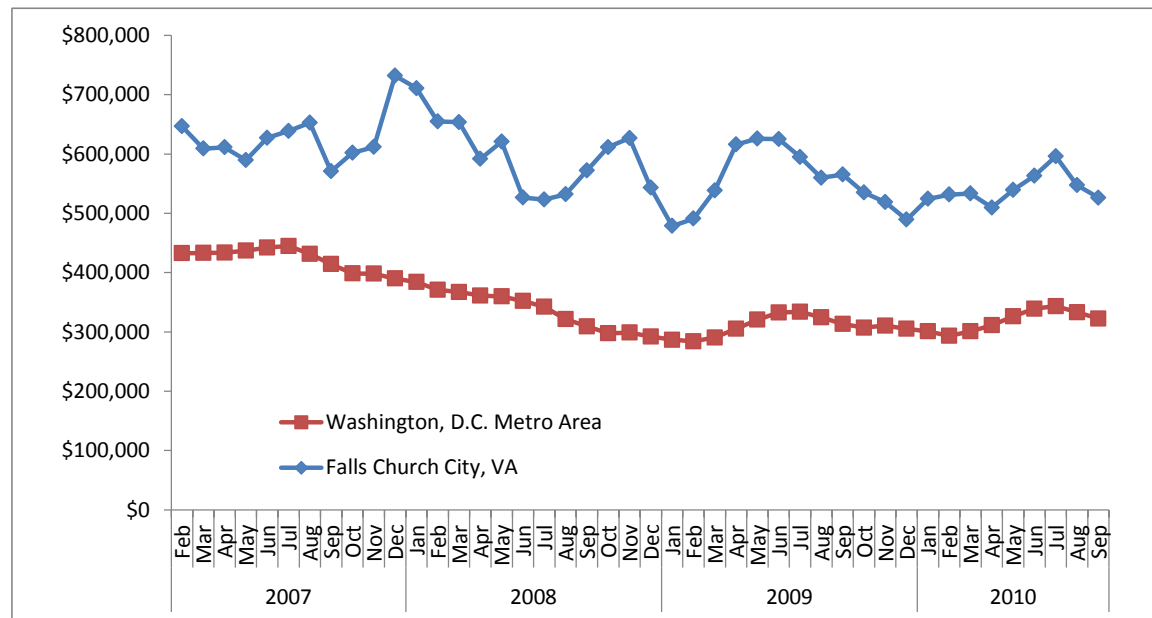
Note: Sales data included in the table above and following charts are for single-family homes and condominium units.

**Sales Market Activity: Three-Month Averages, Falls Church City, VA**



**Adjusted Median Sales Price: Three-Month Averages, Falls Church City, VA and Metro Area**

Prices in September 2010 dollars



This publication was funded through a grant from Fannie Mae. Electronic versions of the Foreclosure Monitor and its Technical Appendix are available online at [www.mwcog.org](http://www.mwcog.org) and [www.NeighborhoodInfoDC.org](http://www.NeighborhoodInfoDC.org). To learn more about foreclosure prevention activities in the region, visit the Capital Area Foreclosure Network (CAFN) at [www.CAFN.org](http://www.CAFN.org).

*The views expressed are those of the authors and should not be attributed to the Urban Institute, Metropolitan Washington Council of Governments, Fannie Mae, their trustees, or their funders.*