



Washington, D.C. Metropolitan Area Foreclosure Monitor: County Profiles



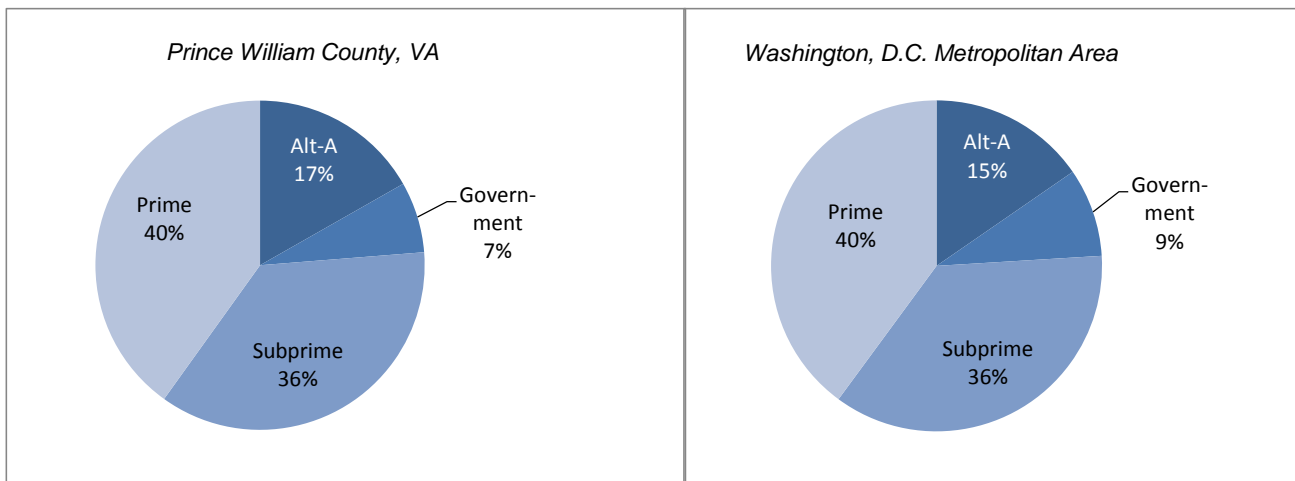
Prince William County, VA September 2010

Key Mortgage Performance Indicators

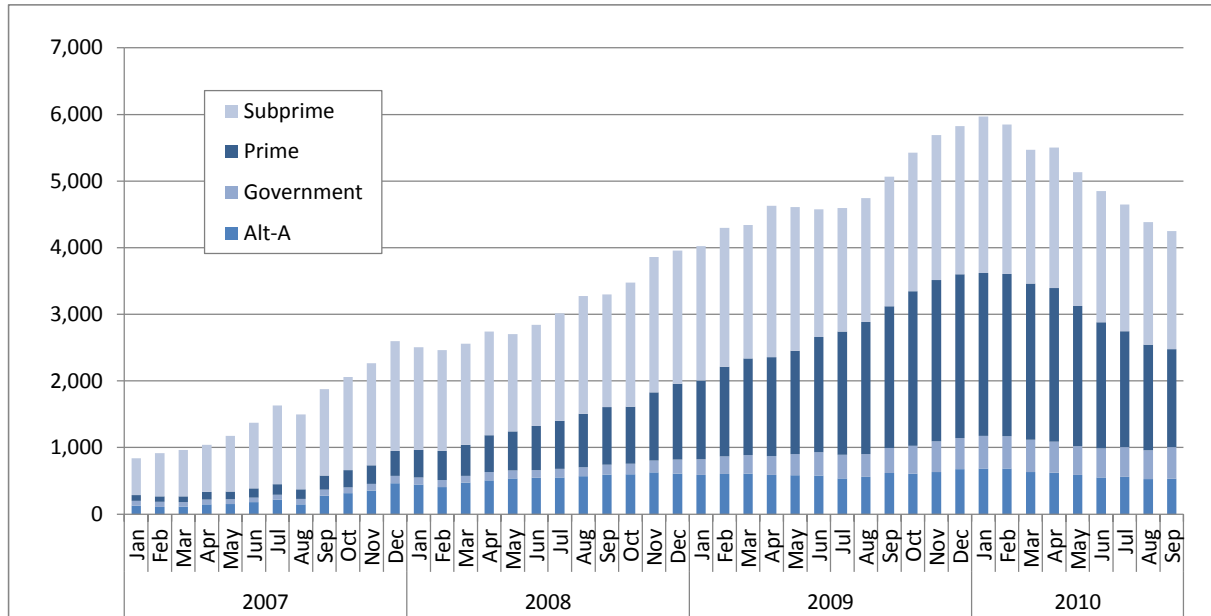
September 2010	Prince William County, VA	Washington, D.C. Metropolitan Area
Foreclosure Inventory		
Number of Loans	2,300	27,700
Percent of Loans	2.6	2.3
Mortgages 30 or More Days Delinquent		
Number of Loans	8,000	98,700
Percent of Loans	9.1	8.1
Pct. Point Change Since 9/2009	-1.8	-0.4
Pct. Point Change Since 9/2008	0.4	1.7
Mortgages 90 or More Days Delinquent		
Number of Loans	4,200	50,900
Percent of Loans	4.8	4.2
Pct. Point Change Since 9/2009	-1.0	-0.1
Pct. Point Change Since 9/2008	1.1	1.8
ZIP Codes with High/Highest REO Risk		
Number of ZIP Codes	6	91
Percent of ZIP Codes	46.2	38.7

Note: Number of loans rounded to the nearest hundred

Foreclosure Inventory by Loan Grade, September 2010



Number of First-lien Mortgages 90 or More Days Delinquent, Prince William County, VA



Seriously delinquent mortgages are those that are 90 days or more past due and not in the foreclosure inventory. Only areas with more than 500 loans are included in the delinquency analysis. See the *Foreclosure Monitor Technical Appendix* for details about the indicator.

PRINCE WILLIAM COUNTY, VA TOP ZIP CODES BY SERIOUS DELINQUENCY RATE September 2010		
ZIP Code	Area	Percent
	Prince William County, VA	4.8
	Metropolitan Area	4.2
22172	Triangle	6.3
22193	Dale City	6.2
22026	Dumfries	5.9
20109	Manassas And Manassas Park Cities	5.7
22191	Woodbridge	5.6
20111	Manassas And Manassas Park Cities	5.1
20112	Manassas	4.2
22192	Woodbridge	4.2
20136	Bristow	3.8
22025	Dumfries	3.8

Data presented for real estate owned (REO) properties compare the relative rate of REO in a ZIP code with the average REO Rate in all ZIP codes. Only areas with more than 500 loans are included in the REO analysis. See the *Foreclosure Monitor Technical Appendix* for details about the indicator.

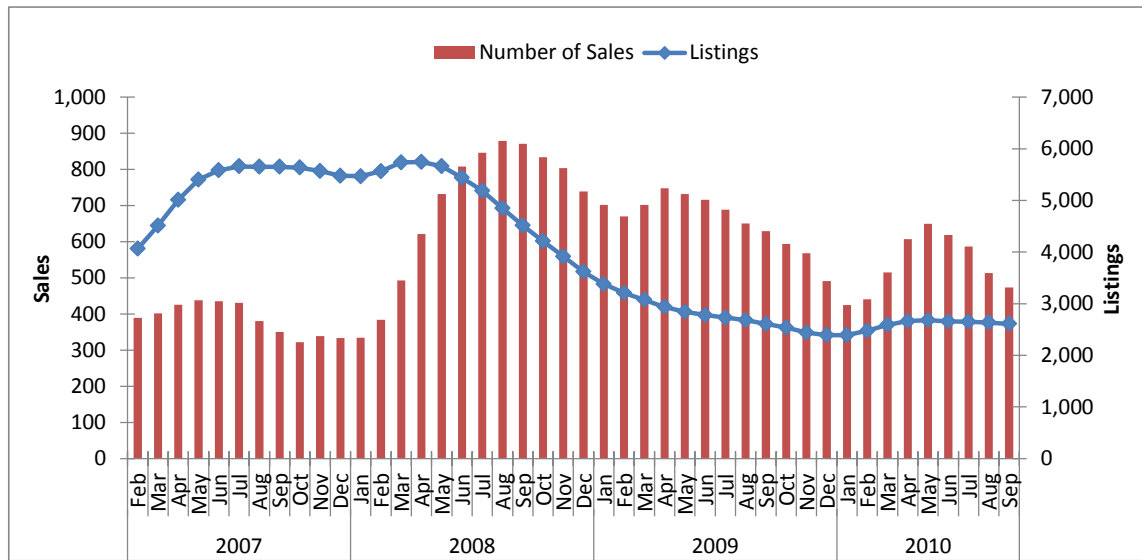
PRINCE WILLIAM COUNTY, VA TOP ZIP CODES BY HIGH/HIGHEST REO RISK September 2010		
ZIP Code	Area	Risk Level
20109	Manassas And Manassas Park Cities	High
20111	Manassas And Manassas Park Cities	High
22191	Woodbridge	High
22193	Dale City	High
22026	Dumfries	High
22192	Woodbridge	High
20136	Bristow	Moderate
22025	Dumfries	Moderate
20169	Haymarket	Moderate
20155	Gainesville	Moderate

Key Sales Market Indicators, Prince William County, VA

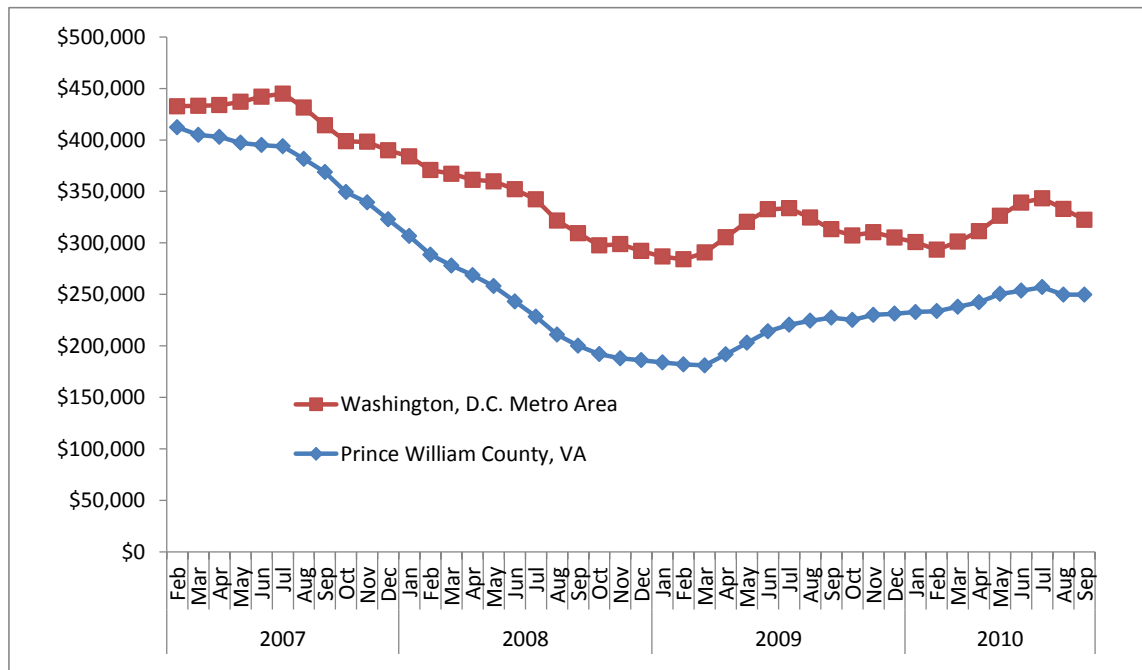
	September				Percent Change (%)		
	2000	2007	2009	2010	2000-10	2007-10	2009-10
Number of Sales							
County	498	305	588	467	-6.2	53.1	-20.6
Metro Area	6,810	3,839	5,782	4,921	-27.7	28.2	-14.9
Median Sales Price							
County	\$171,467	\$364,937	\$224,148	\$244,111	42.4	-33.1	8.9
Metro Area	\$216,351	\$404,077	\$310,034	\$311,443	44.0	-22.9	0.5
Pct. Of Home Sales with 90+ days on market							
County	11	56	14	11	-6.5	-81.0	-24.2
Metro Area	15	40	27	23	57.3	-42.0	-13.3
Number of New Listings							
County	556	1,345	885	742	33.5	-44.8	-16.2
Metro Area	8,062	12,458	9,593	9,746	20.9	-21.8	1.6
Number of Listings							
County	993	5,674	2,635	2,616	163.4	-53.9	-0.7
Metro Area	17,260	48,580	33,181	34,856	101.9	-28.3	5.0
Months of Inventory							
County	2.0	18.6	4.5	5.6	180.9	-69.9	25.0
Metro Area	2.5	12.7	5.7	7.1	179.5	-44.0	23.4

Note: Sales data included in the table above and following charts are for single-family homes and condominium units.

Sales Market Activity: Three-Month Averages, Prince William County, VA



Adjusted Median Sales Price: Three-Month Averages, Prince William County, VA and Metro Area
 Prices in September 2010 dollars



This publication was funded through a grant from Fannie Mae. Electronic versions of the Foreclosure Monitor and its Technical Appendix are available online at www.mwcog.org and www.NeighborhoodInfoDC.org. To learn more about foreclosure prevention activities in the region, visit the Capital Area Foreclosure Network (CAFN) at www.CAFN.org.

The views expressed are those of the authors and should not be attributed to the Urban Institute, Metropolitan Washington Council of Governments, Fannie Mae, their trustees, or their funders.