



Washington, D.C. Metropolitan Area Foreclosure Monitor: County Profiles



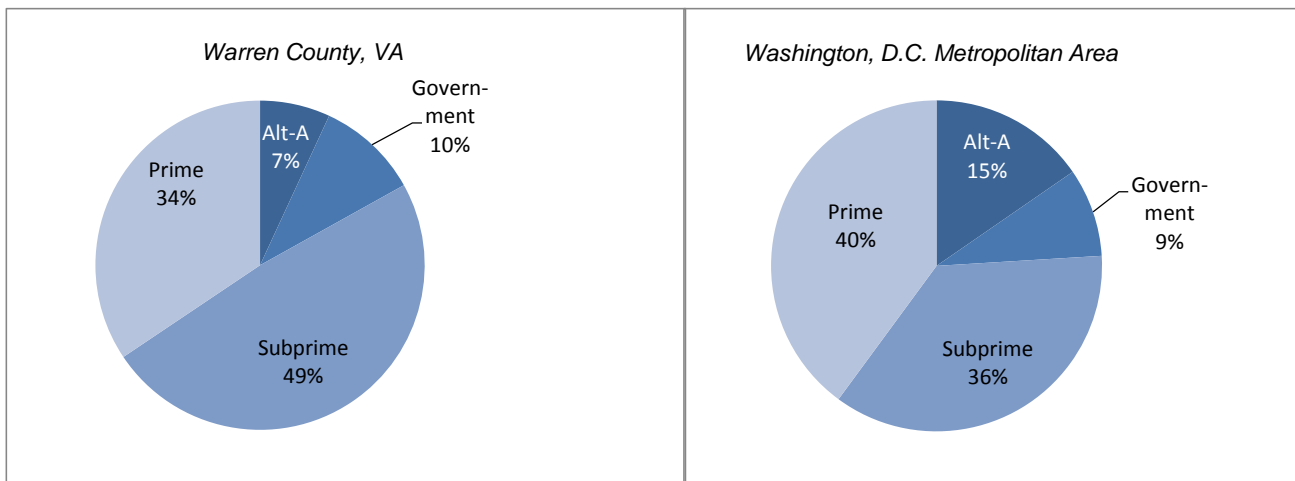
Warren County, VA September 2010

Key Mortgage Performance Indicators

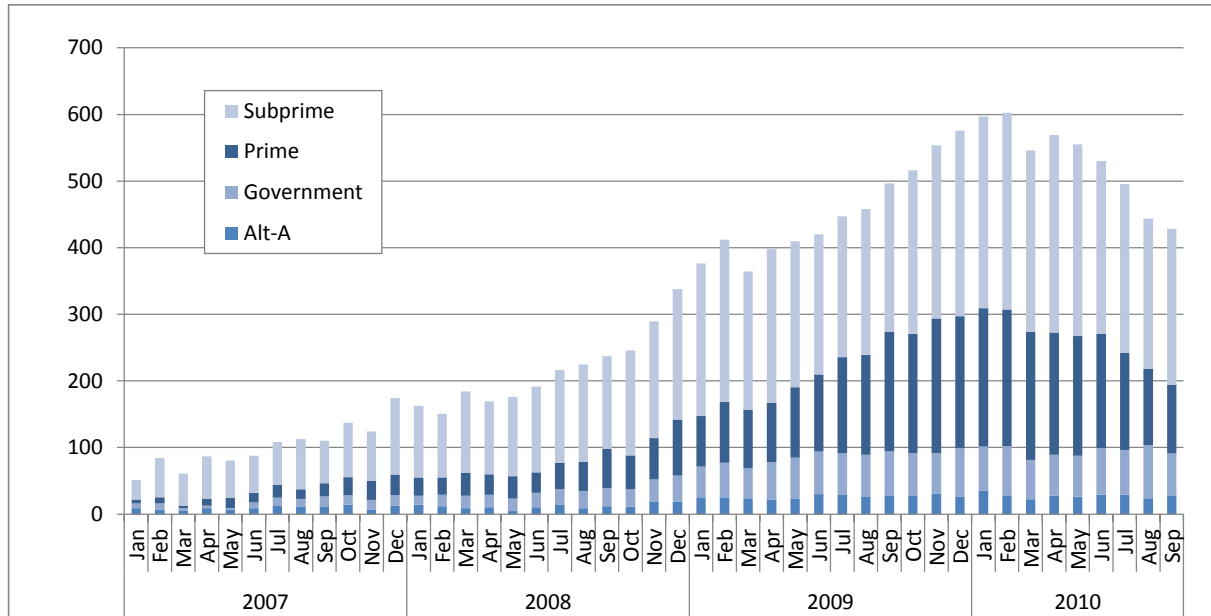
September 2010	Warren County, VA	Washington, D.C. Metropolitan Area
Foreclosure Inventory		
Number of Loans	200	27,700
Percent of Loans	2.7	2.3
Mortgages 30 or More Days Delinquent		
Number of Loans	1,000	98,700
Percent of Loans	11.4	8.1
Pct. Point Change Since 9/2009	-2.1	-0.4
Pct. Point Change Since 9/2008	1.9	1.7
Mortgages 90 or More Days Delinquent		
Number of Loans	400	50,900
Percent of Loans	5.1	4.2
Pct. Point Change Since 9/2009	-0.9	-0.1
Pct. Point Change Since 9/2008	2.3	1.8
ZIP Codes with High/Highest REO Risk		
Number of ZIP Codes	2	91
Percent of ZIP Codes	100.0	38.7

Note: Number of loans rounded to the nearest hundred

Foreclosure Inventory by Loan Grade, September 2010



Number of First-lien Mortgages 90 or More Days Delinquent, Warren County, VA



Seriously delinquent mortgages are those that are 90 days or more past due and not in the foreclosure inventory. Only areas with more than 500 loans are included in the delinquency analysis. See the *Foreclosure Monitor Technical Appendix* for details about the indicator.

WARREN COUNTY, VA TOP ZIP CODES BY SERIOUS DELINQUENCY RATE September 2010		
ZIP Code	Area	Percent
	Warren County, VA	5.1
	Metropolitan Area	4.2
22630	Front Royal	5.2
22642	Linden	4.8

Data presented for real estate owned (REO) properties compare the relative rate of REO in a ZIP code with the average REO Rate in all ZIP codes. Only areas with more than 500 loans are included in the REO analysis. See the *Foreclosure Monitor Technical Appendix* for details about the indicator.

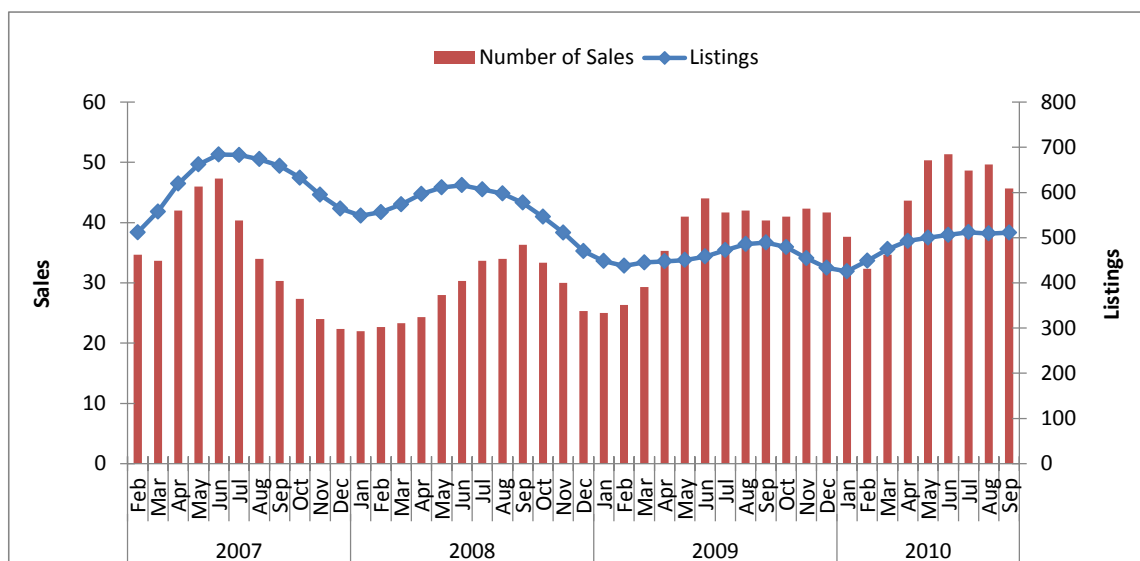
WARREN COUNTY, VA TOP ZIP CODES BY HIGH/HIGHEST REO RISK September 2010		
ZIP Code	Area	Risk Level
22630	Front Royal	High
22642	Linden	High

Key Sales Market Indicators, Warren County, VA

	September				Percent Change (%)		
	2000	2007	2009	2010	2000-10	2007-10	2009-10
Number of Sales							
County	38	32	48	59	55.3	84.4	22.9
Metro Area	6,810	3,839	5,782	4,921	-27.7	28.2	-14.9
Median Sales Price							
County	\$149,291	\$224,780	\$164,494	\$130,000	-12.9	-42.2	-21.0
Metro Area	\$216,351	\$404,077	\$310,034	\$311,443	44.0	-22.9	0.5
Pct. Of Home Sales with 90+ days on market							
County	29	59	40	36	23.0	-40.1	-10.1
Metro Area	15	40	27	23	57.3	-42.0	-13.3
Number of New Listings							
County	61	97	85	88	44.3	-9.3	3.5
Metro Area	8,062	12,458	9,593	9,746	20.9	-21.8	1.6
Number of Listings							
County	257	658	495	504	96.1	-23.4	1.8
Metro Area	17,260	48,580	33,181	34,856	101.9	-28.3	5.0
Months of Inventory							
County	6.8	20.6	10.3	8.5	26.3	-58.5	-17.2
Metro Area	2.5	12.7	5.7	7.1	179.5	-44.0	23.4

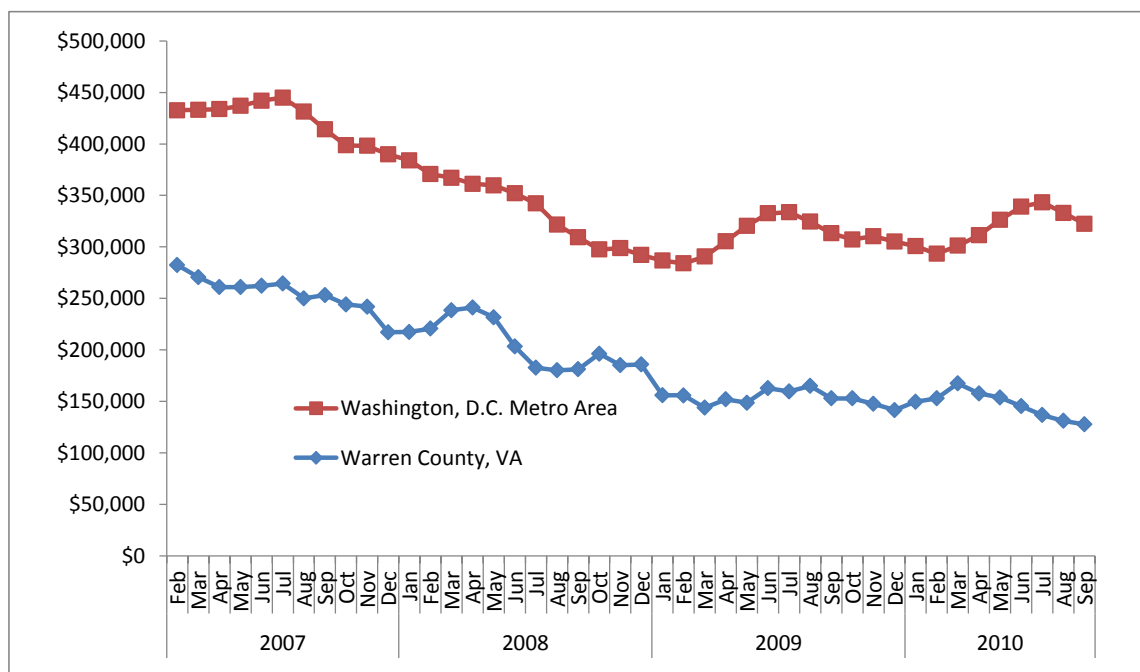
Note: Sales data included in the table above and following charts are for single-family homes and condominium units.

Sales Market Activity: Three-Month Averages, Warren County, VA



Adjusted Median Sales Price: Three-Month Averages, Warren County, VA and Metro Area

Prices in September 2010 dollars



This publication was funded through a grant from Fannie Mae. Electronic versions of the Foreclosure Monitor and its Technical Appendix are available online at www.mwcog.org and www.NeighborhoodInfoDC.org. To learn more about foreclosure prevention activities in the region, visit the Capital Area Foreclosure Network (CAFN) at www.CAFN.org.

The views expressed are those of the authors and should not be attributed to the Urban Institute, Metropolitan Washington Council of Governments, Fannie Mae, their trustees, or their funders.