



Washington, D.C. Metropolitan Area Foreclosure Monitor: County Profiles



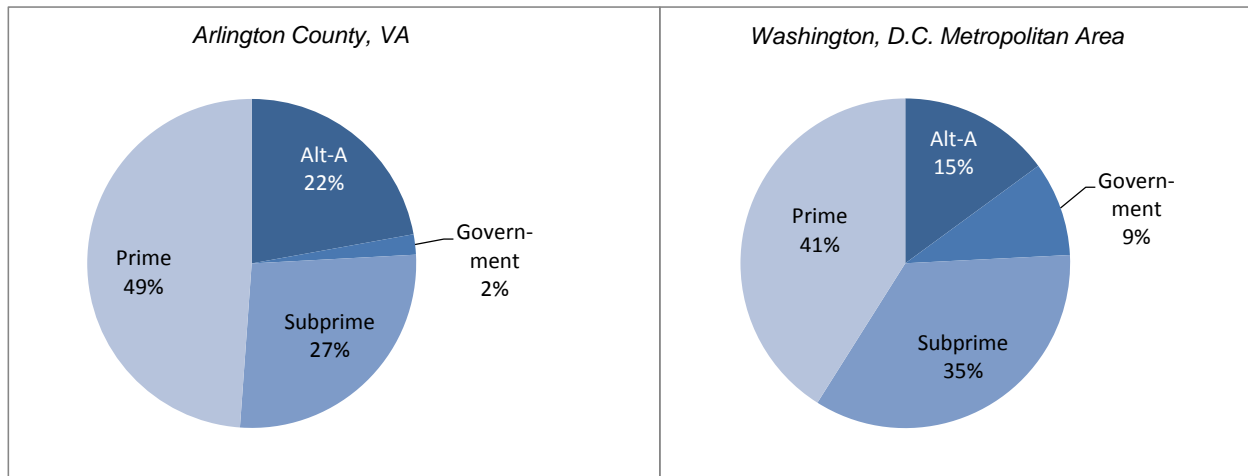
Arlington County, VA December 2010

Key Mortgage Performance Indicators

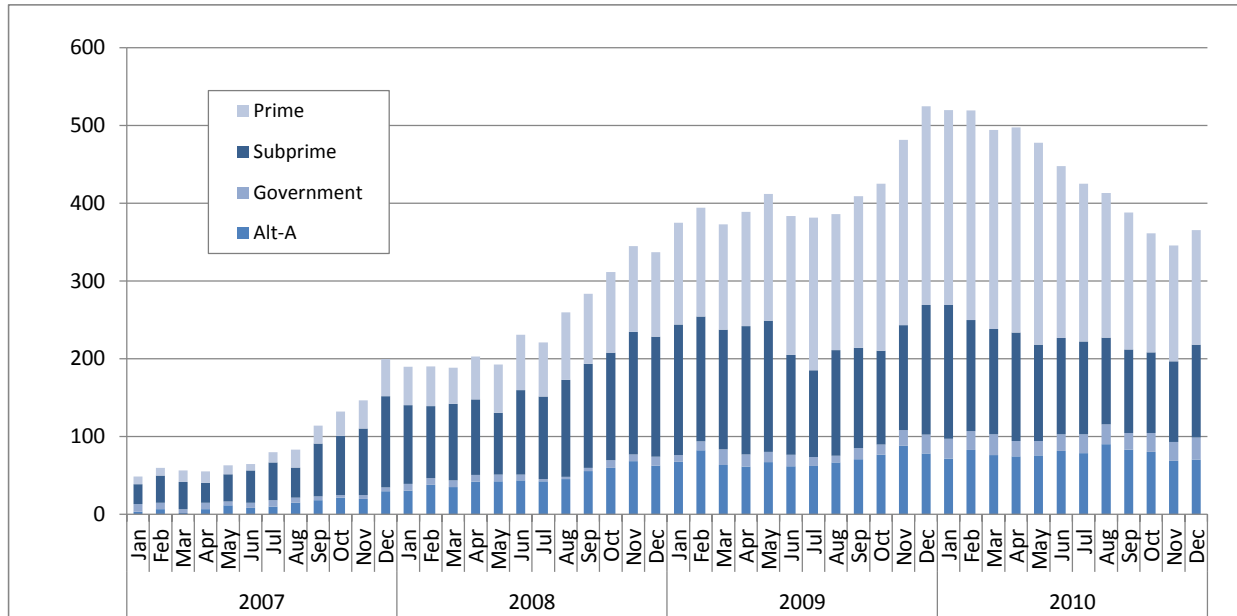
December 2010	Arlington County, VA	Washington, D.C. Metropolitan Area
Foreclosure Inventory		
Number of Loans	300	29,900
Percent of Loans	0.7	2.5
Mortgages 30 or More Days Delinquent		
Number of Loans	900	92,100
Percent of Loans	2.0	7.6
Pct. Point Change Since 12/2009	-0.5	-1.7
Pct. Point Change Since 12/2008	-0.2	0.0
Mortgages 90 or More Days Delinquent		
Number of Loans	400	46,500
Percent of Loans	0.8	3.9
Pct. Point Change Since 12/2009	-0.4	-1.2
Pct. Point Change Since 12/2008	0.1	0.8
ZIP Codes with High/Highest Risk for New REO		
Number of ZIP Codes	0	89
Percent of ZIP Codes	0.0	37.9

Note: Number of loans rounded to the nearest hundred

Foreclosure Inventory by Loan Grade, December 2010



Number of First-lien Mortgages 90 or More Days Delinquent, Arlington County, VA



Seriously delinquent mortgages are those that are 90 days or more past due and not in the foreclosure inventory. Only areas with more than 500 loans are included in the delinquency analysis. See the *Foreclosure Monitor Technical Appendix* for details about the indicator.

ARLINGTON COUNTY, VA TOP ZIP CODES BY SERIOUS DELINQUENCY RATE December 2010		
ZIP Code	Area	Percent
	<i>Arlington County, VA</i>	0.8
	<i>Metropolitan Area</i>	3.9
22204	Arlington	1.9
22206	Arlington	1.0
22203	Arlington	0.7
22213	Arlington	0.6
22209	Arlington	0.6
22205	Arlington	0.5
22202	Arlington	0.5
22207	Arlington	0.5
22201	Arlington	0.4

Data presented for real estate owned (REO) properties compare the relative rate of REO in a ZIP code with the average REO Rate in all ZIP codes. Only areas with more than 500 loans are included in the REO analysis. See the *Foreclosure Monitor Technical Appendix* for details about the indicator.

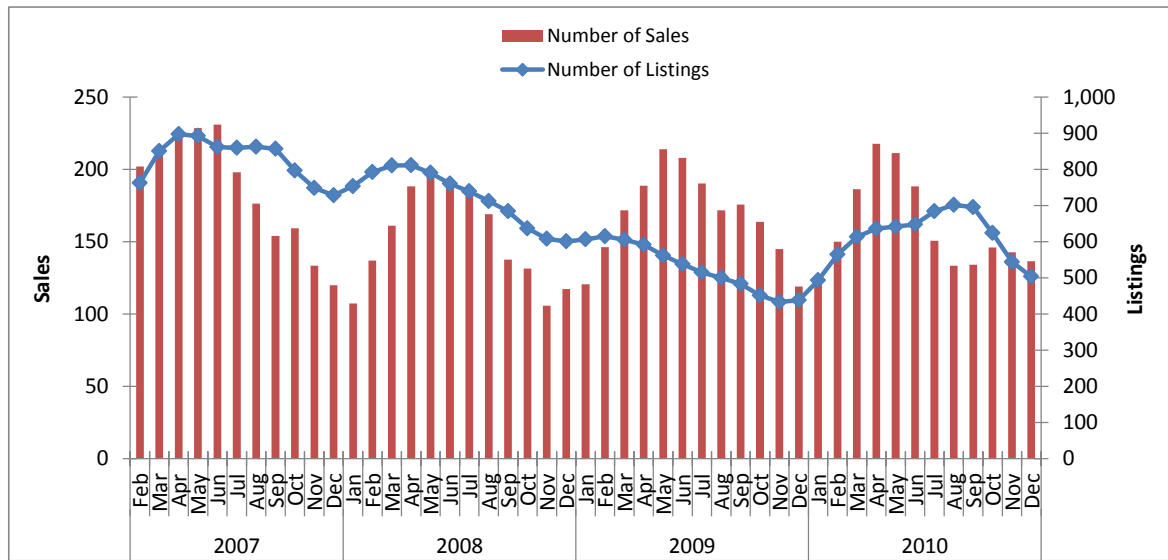
ARLINGTON COUNTY, VA TOP ZIP CODES BY HIGH/HIGHEST RISK FOR NEW REO December 2010		
ZIP Code	Area	Risk Level
22209	Arlington	Minimal
22204	Arlington	Minimal
22202	Arlington	Minimal
22206	Arlington	Minimal
22203	Arlington	Minimal
22201	Arlington	Minimal
22205	Arlington	Minimal
22207	Arlington	Minimal
22213	Arlington	Minimal

Key Sales Market Indicators, Arlington County, VA

	December				Percent Change (%)		
	2000	2007	2009	2010	2000-10	2007-10	2009-10
Number of Sales							
County	197	160	123	157	-20.3	-1.9	27.6
Metro Area	6,582	4,209	5,472	5,220	-20.7	24.0	-4.6
Median Sales Price							
County	\$275,816	\$462,081	\$421,240	\$363,300	31.7	-21.4	-13.8
Metro Area	\$232,448	\$407,165	\$314,677	\$317,383	36.5	-22.1	0.9
Number of New Listings							
County	162	144	128	132	-18.5	-8.3	3.1
Metro Area	4,780	7,085	5,611	5,188	8.5	-26.8	-7.5
Number of Listings							
County	238	718	403	532	123.5	-25.9	32.0
Metro Area	12,709	39,683	20,483	22,350	75.9	-43.7	9.1
Months of Inventory							
County	2.1	5.0	5.4	4.8	128.7	-4.8	-10.7
Metro Area	3.1	10.4	6.1	6.2	102.2	-40.5	2.0

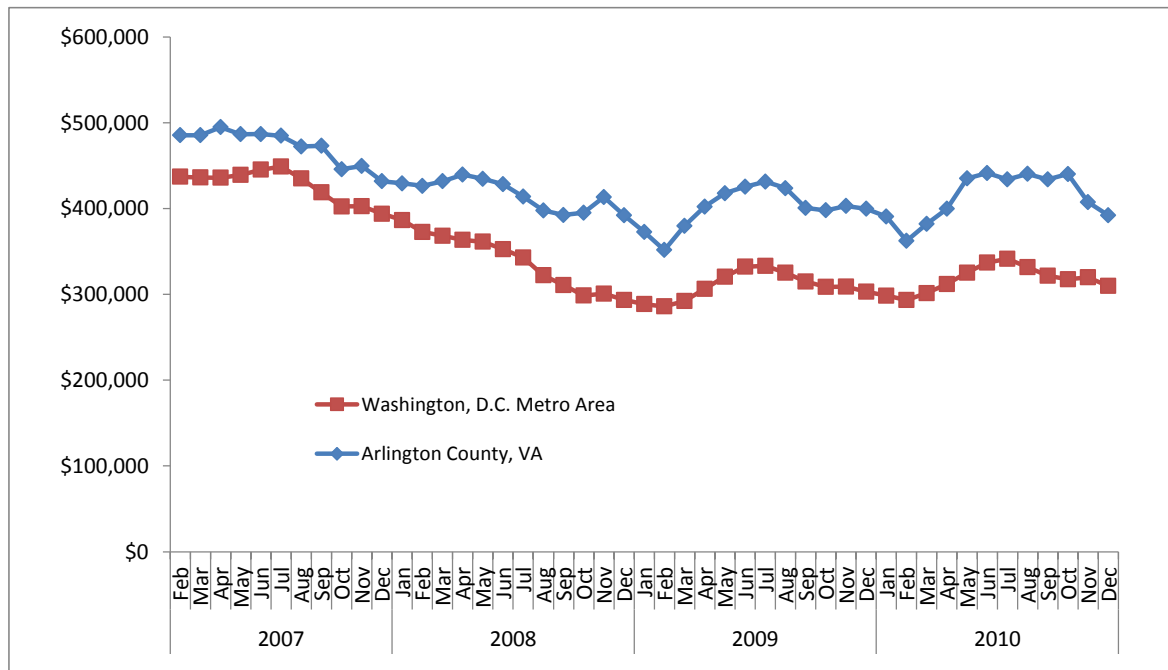
Note: Sales data included in the table above and following charts are for single-family homes and condominium units.

Sales Market Activity: Three-Month Averages, Arlington County, VA



Adjusted Median Sales Price: Three-Month Averages, Arlington County, VA and Metro Area

Prices in December 2010 dollars



This publication was funded through a grant from Fannie Mae. Electronic versions of the Foreclosure Monitor and its Technical Appendix are available online at www.mwcog.org and www.NeighborhoodInfoDC.org. To learn more about foreclosure prevention activities in the region, visit the Capital Area Foreclosure Network (CAFN) at www.CAFN.org.

The views expressed are those of the authors and should not be attributed to the Urban Institute, Metropolitan Washington Council of Governments, Fannie Mae, their trustees, or their funders.