



Washington, D.C. Metropolitan Area Foreclosure Monitor: County Profiles



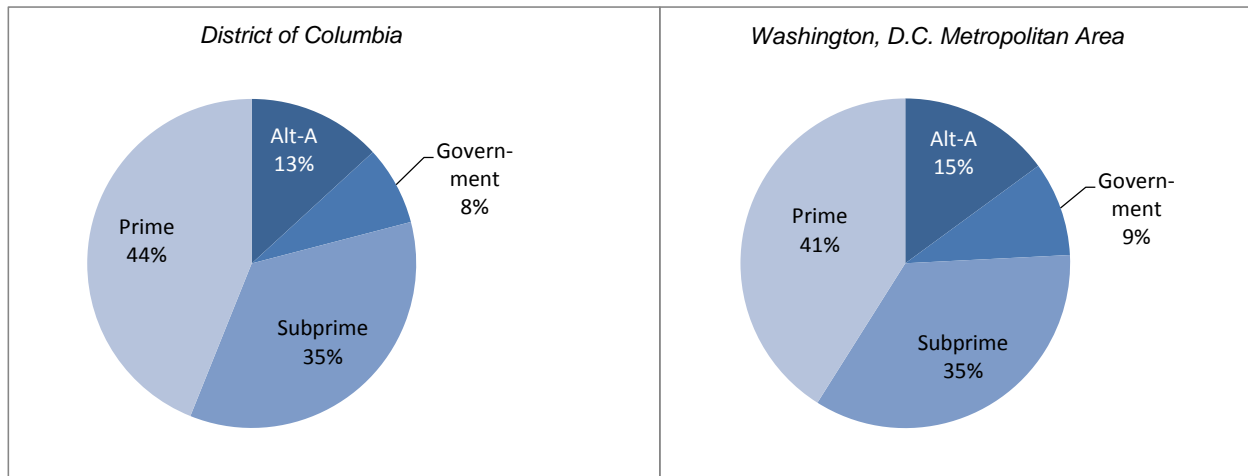
District of Columbia December 2010

Key Mortgage Performance Indicators

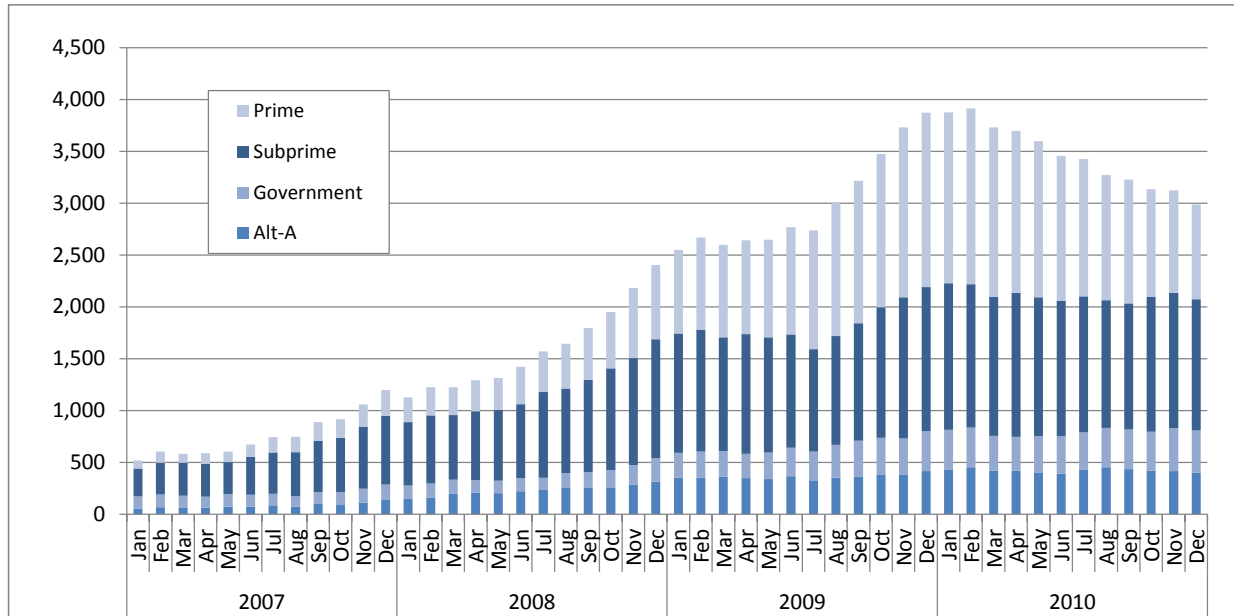
December 2010	District of Columbia	Washington, D.C. Metropolitan Area
Foreclosure Inventory		
Number of Loans	2,800	29,900
Percent of Loans	2.7	2.5
Mortgages 30 or More Days Delinquent		
Number of Loans	7,000	92,100
Percent of Loans	6.7	7.6
Pct. Point Change Since 12/2009	-1.2	-1.7
Pct. Point Change Since 12/2008	0.2	0.0
Mortgages 90 or More Days Delinquent		
Number of Loans	3,000	46,500
Percent of Loans	2.9	3.9
Pct. Point Change Since 12/2009	-0.9	-1.2
Pct. Point Change Since 12/2008	0.6	0.8
ZIP Codes with High/Highest Risk for New REO		
Number of ZIP Codes	6	89
Percent of ZIP Codes	28.6	37.9

Note: Number of loans rounded to the nearest hundred

Foreclosure Inventory by Loan Grade, December 2010



Number of First-lien Mortgages 90 or More Days Delinquent, District of Columbia



Seriously delinquent mortgages are those that are 90 days or more past due and not in the foreclosure inventory. Only areas with more than 500 loans are included in the delinquency analysis. See the *Foreclosure Monitor Technical Appendix* for details about the indicator.

DISTRICT OF COLUMBIA TOP ZIP CODES BY SERIOUS DELINQUENCY RATE December 2010		
ZIP Code	Area	Percent
	<i>District of Columbia</i>	2.9
	<i>Metropolitan Area</i>	3.9
20032	Congress Heights	8.2
20019	Deanwood	7.0
20018	Woodridge, Fort Lincoln, Gateway	6.3
20020	Barry Farm & Historic Anacostia & Fairfax Village	5.8
20011	Brightwood Park/ Petworth	4.9
20017	Washington	4.7
20002	Trinidad, Ivy City, Brookland	3.3
20001	Howard, Codozo, Shaw	2.6
20012	Washington	2.5
20010	Washington	2.3

Data presented for real estate owned (REO) properties compare the relative rate of REO in a ZIP code with the average REO Rate in all ZIP codes. Only areas with more than 500 loans are included in the REO analysis. See the *Foreclosure Monitor Technical Appendix* for details about the indicator.

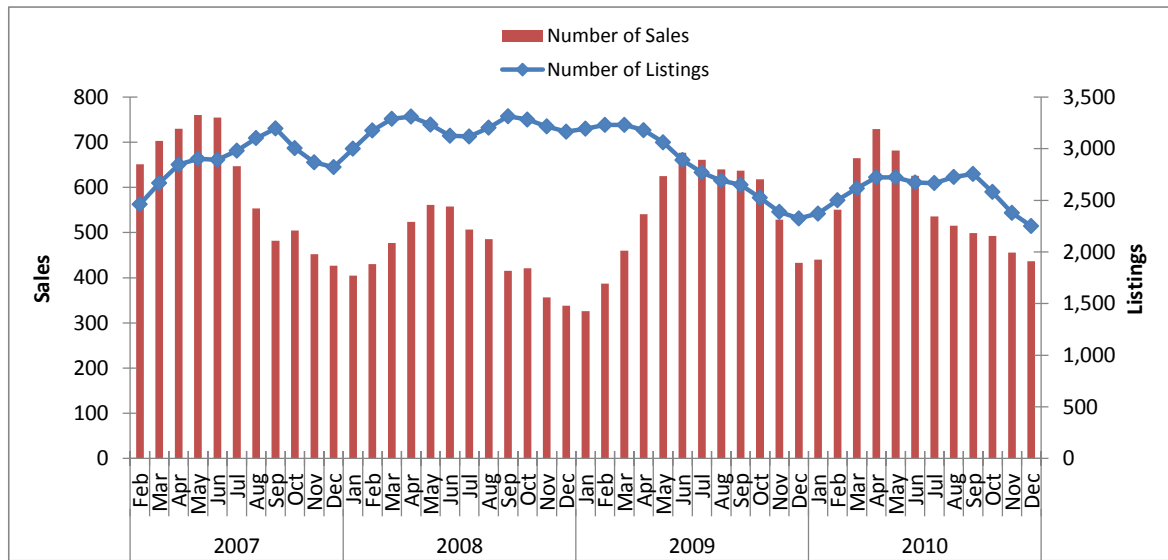
DISTRICT OF COLUMBIA TOP ZIP CODES BY HIGH/HIGHEST RISK FOR NEW REO December 2010		
ZIP Code	Area	Risk Level
20019	Deanwood	High
20032	Congress Heights	High
20020	Barry Farm & Historic Anacostia &	High
20002	Trinidad, Ivy City, Brookland	High
20011	Brightwood Park/ Petworth	High
20018	Woodridge, Fort Lincoln, Gateway	High
20010	Washington	Moderate
20017	Washington	Moderate
20001	Howard, Codozo, Shaw	Moderate
20004	Washington	Minimal

Key Sales Market Indicators, District of Columbia

	December				Percent Change (%)		
	2000	2007	2009	2010	2000-10	2007-10	2009-10
Number of Sales							
County	671	513	555	483	-28.0	-5.8	-13.0
Metro Area	6,582	4,209	5,472	5,220	-20.7	24.0	-4.6
Median Sales Price							
County	\$203,727	\$420,550	\$383,501	\$399,000	95.8	-5.1	4.0
Metro Area	\$232,448	\$407,165	\$314,677	\$317,383	36.5	-22.1	0.9
Number of New Listings							
County	463	482	565	481	3.9	-0.2	-14.9
Metro Area	4,780	7,085	5,611	5,188	8.5	-26.8	-7.5
Number of Listings							
County	1,138	2,662	2,343	2,265	99.0	-14.9	-3.3
Metro Area	12,709	39,683	20,483	22,350	75.9	-43.7	9.1
Months of Inventory							
County	3.1	6.3	5.7	6.5	105.5	2.1	13.2
Metro Area	3.1	10.4	6.1	6.2	102.2	-40.5	2.0

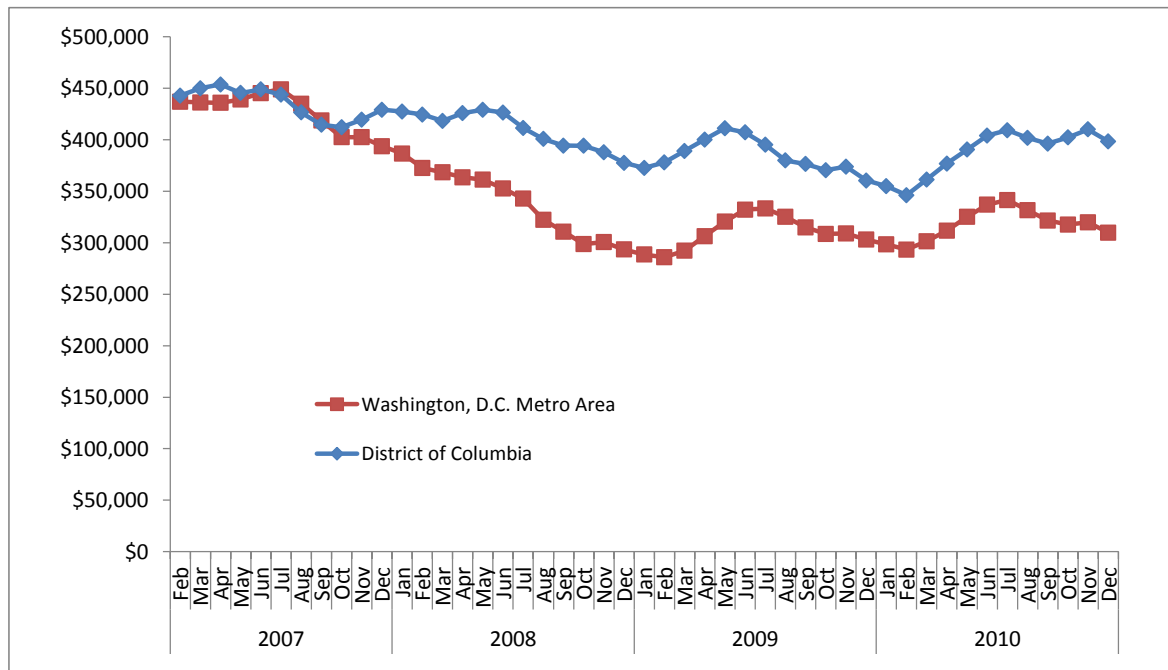
Note: Sales data included in the table above and following charts are for single-family homes and condominium units.

Sales Market Activity: Three-Month Averages, District of Columbia



Adjusted Median Sales Price: Three-Month Averages, District of Columbia and Metro Area

Prices in December 2010 dollars



This publication was funded through a grant from Fannie Mae. Electronic versions of the Foreclosure Monitor and its Technical Appendix are available online at www.mwcog.org and www.NeighborhoodInfoDC.org. To learn more about foreclosure prevention activities in the region, visit the Capital Area Foreclosure Network (CAFN) at www.CAFN.org.

The views expressed are those of the authors and should not be attributed to the Urban Institute, Metropolitan Washington Council of Governments, Fannie Mae, their trustees, or their funders.