



# Washington, D.C. Metropolitan Area Foreclosure Monitor: County Profiles



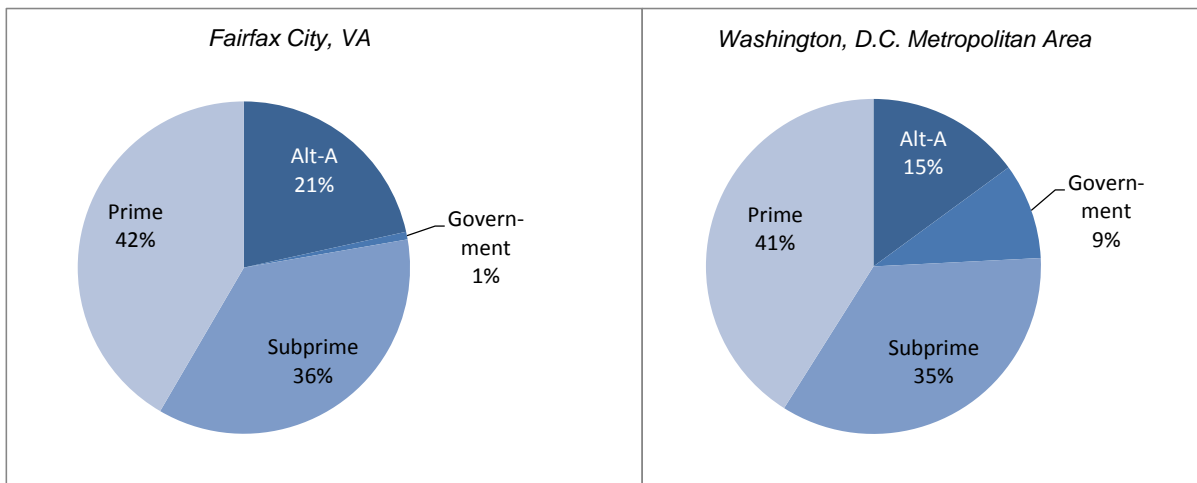
## Fairfax City, VA December 2010

### Key Mortgage Performance Indicators

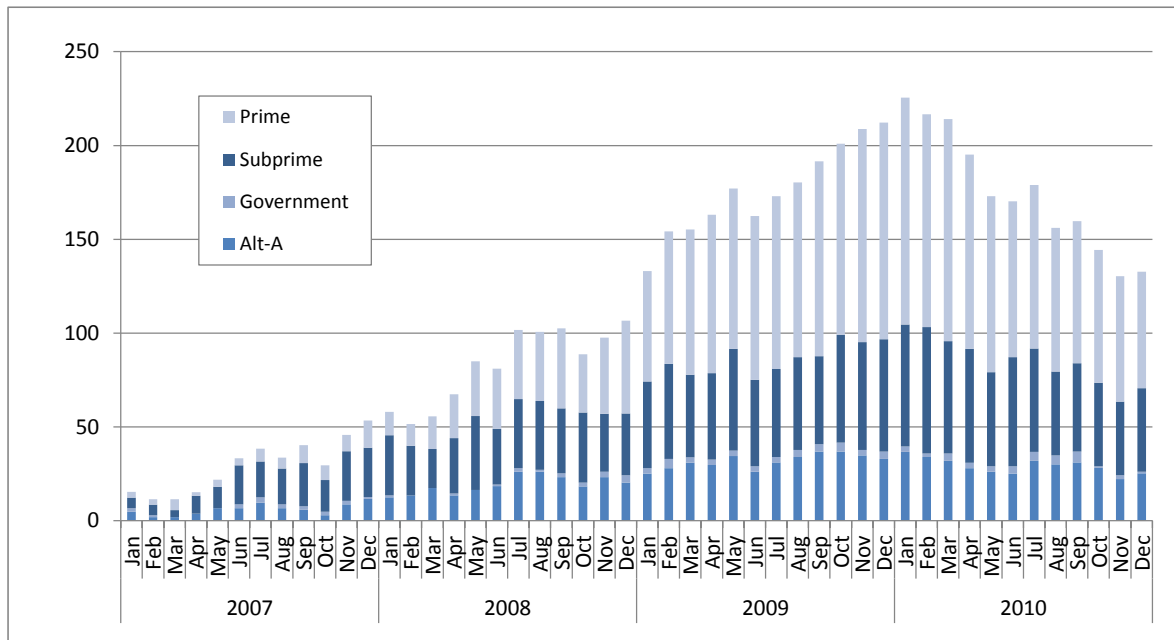
December 2010	Fairfax City, VA	Washington, D.C. Metropolitan Area
<b>Foreclosure Inventory</b>		
Number of Loans	100	29,900
Percent of Loans	1.7	2.5
<b>Mortgages 30 or More Days Delinquent</b>		
Number of Loans	300	92,100
Percent of Loans	3.7	7.6
Pct. Point Change Since 12/2009	-1.2	-1.7
Pct. Point Change Since 12/2008	0.2	0.0
<b>Mortgages 90 or More Days Delinquent</b>		
Number of Loans	Fewer than 50	46,500
Percent of Loans	1.7	3.9
Pct. Point Change Since 12/2009	-1.0	-1.2
Pct. Point Change Since 12/2008	0.4	0.8
<b>ZIP Codes with High/Highest Risk for New REO</b>		
Number of ZIP Codes	0	89
Percent of ZIP codes	0.0	37.9

*Note: Number of loans rounded to the nearest hundred*

### Foreclosure Inventory by Loan Grade, December 2010



**Number of First-lien Mortgages 90 or More Days Delinquent, Fairfax City, VA**

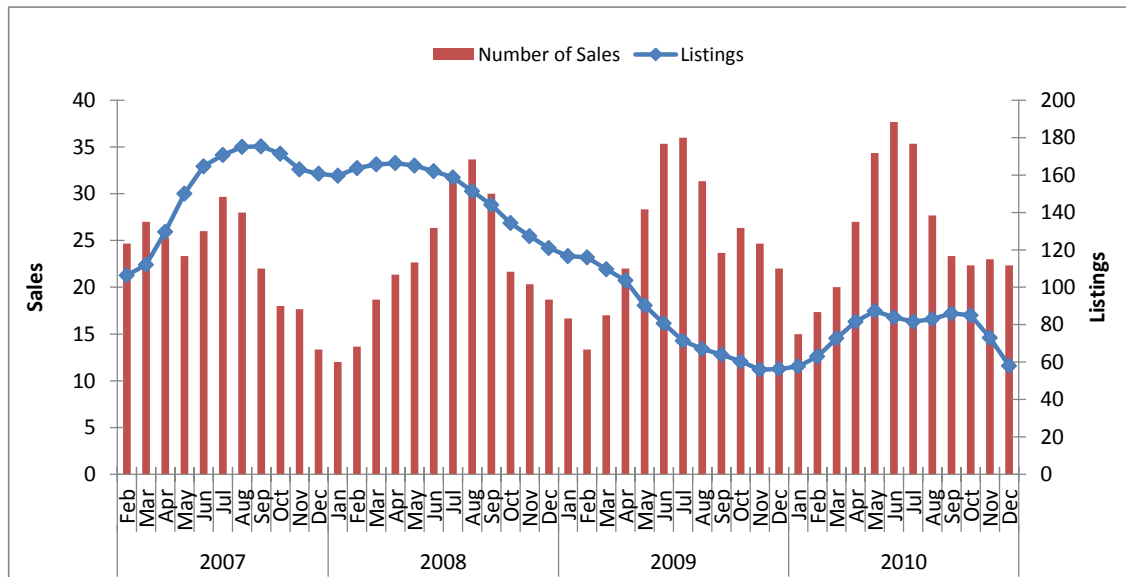


**Key Sales Market Indicators, Fairfax City, VA**

	December				Percent Change (%)		
	2000	2007	2009	2010	2000-10	2007-10	2009-10
<b>Number of Sales</b>							
County	18	16	17	25	38.9	56.3	47.1
Metro Area	6,582	4,209	5,472	5,220	-20.7	24.0	-4.6
<b>Median Sales Price</b>							
County	\$295,875	\$467,863	\$353,924	\$432,000	46.0	-7.7	22.1
Metro Area	\$232,448	\$407,165	\$314,677	\$317,383	36.5	-22.1	0.9
<b>Number of New Listings</b>							
County	10	27	21	13	30.0	-51.9	-38.1
Metro Area	4,780	7,085	5,611	5,188	8.5	-26.8	-7.5
<b>Number of Listings</b>							
County	28	154	51	52	85.7	-66.2	2.0
Metro Area	12,709	39,683	20,483	22,350	75.9	-43.7	9.1
<b>Months of Inventory</b>							
County	3.0	10.2	5.5	3.6	20.0	-64.7	-34.9
Metro Area	3.1	10.4	6.1	6.2	102.2	-40.5	2.0

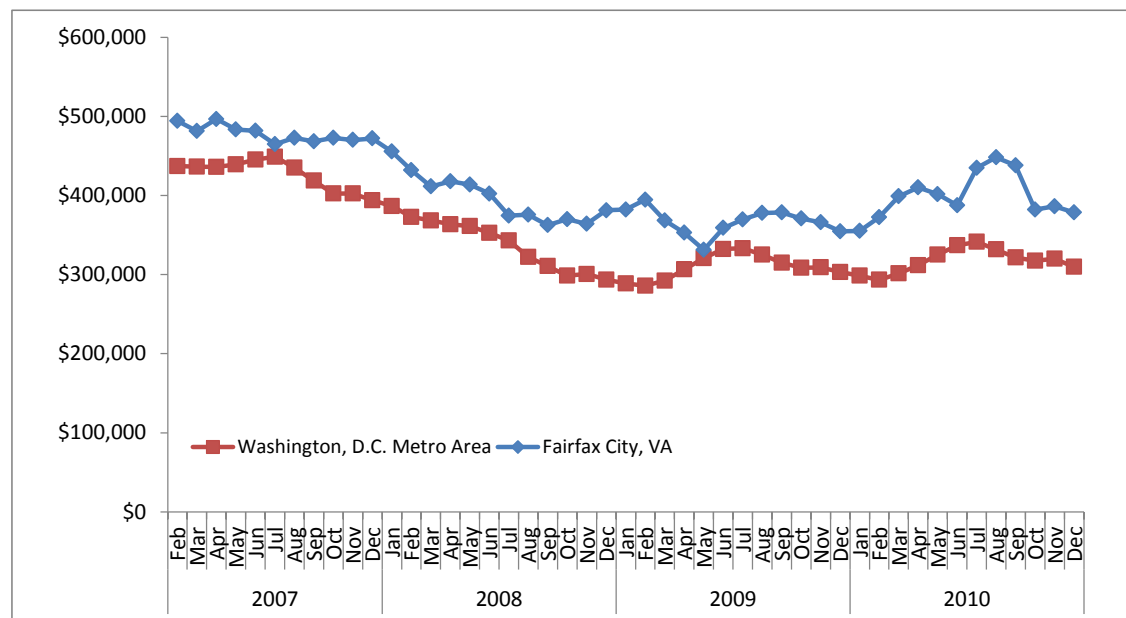
Note: Sales data included in the table above and following charts are for single-family homes and condominium units.

**Sales Market Activity: Three-Month Averages, Fairfax City, VA**



**Adjusted Median Sales Price: Three-Month Averages, Fairfax City, VA and Metro Area**

Prices in December 2010 dollars



This publication was funded through a grant from Fannie Mae. Electronic versions of the Foreclosure Monitor and its Technical Appendix are available online at [www.mwcog.org](http://www.mwcog.org) and [www.NeighborhoodInfoDC.org](http://www.NeighborhoodInfoDC.org). To learn more about foreclosure prevention activities in the region, visit the Capital Area Foreclosure Network (CAFN) at [www.CAFN.org](http://www.CAFN.org).

*The views expressed are those of the authors and should not be attributed to the Urban Institute, Metropolitan Washington Council of Governments, Fannie Mae, their trustees, or their funders.*