



# Washington, D.C. Metropolitan Area Foreclosure Monitor: County Profiles



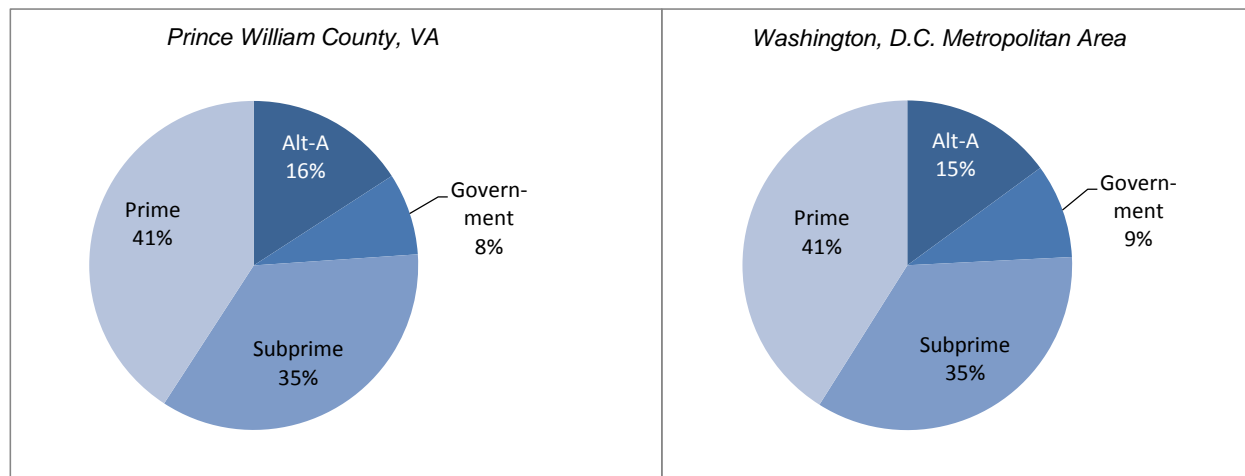
## Prince William County, VA December 2010

### Key Mortgage Performance Indicators

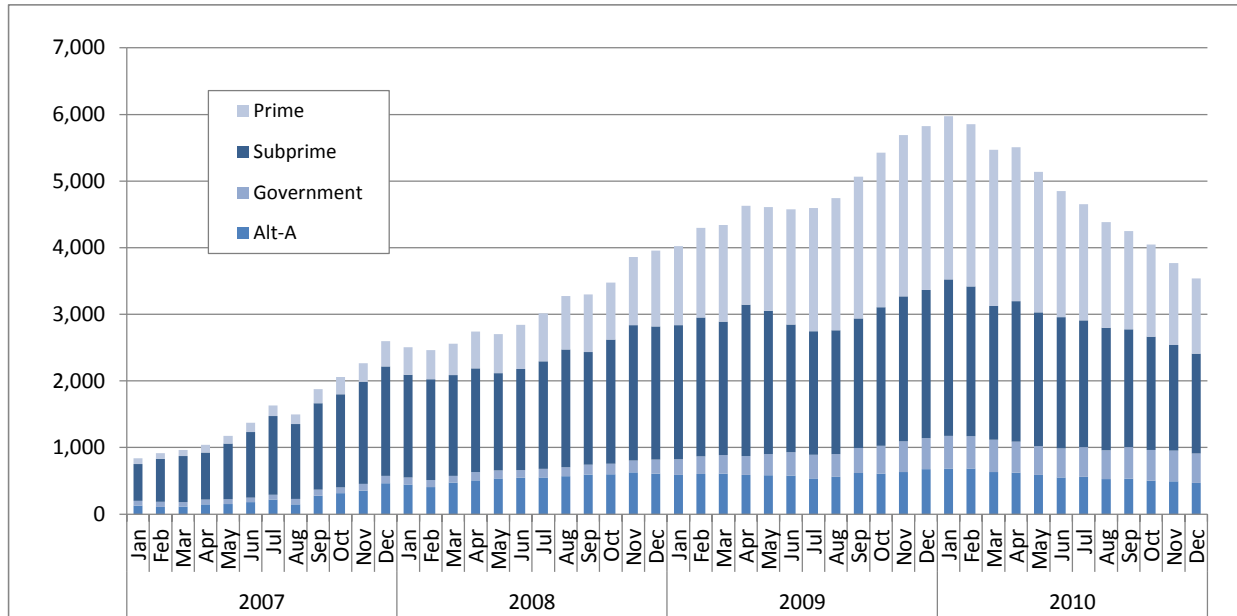
December 2010	Prince William County, VA	Washington, D.C. Metropolitan Area
<b>Foreclosure Inventory</b>		
Number of Loans	2,500	29,900
Percent of Loans	2.9	2.5
<b>Mortgages 30 or More Days Delinquent</b>		
Number of Loans	7,100	92,100
Percent of Loans	8.2	7.6
Pct. Point Change Since 12/2009	-3.4	-1.7
Pct. Point Change Since 12/2008	-1.8	0.0
<b>Mortgages 90 or More Days Delinquent</b>		
Number of Loans	3,500	46,500
Percent of Loans	4.1	3.9
Pct. Point Change Since 12/2009	-2.6	-1.2
Pct. Point Change Since 12/2008	-0.4	0.8
<b>ZIP Codes with High/Highest Risk for New REO</b>		
Number of ZIP Codes	7	89
Percent of ZIP Codes	53.8	37.9

*Note: Number of loans rounded to the nearest hundred*

### Foreclosure Inventory by Loan Grade, December 2010



**Number of First-lien Mortgages 90 or More Days Delinquent, Prince William County, VA**



Seriously delinquent mortgages are those that are 90 days or more past due and not in the foreclosure inventory. Only areas with more than 500 loans are included in the delinquency analysis. See the *Foreclosure Monitor Technical Appendix* for details about the indicator.

PRINCE WILLIAM COUNTY, VA TOP ZIP CODES BY SERIOUS DELINQUENCY RATE December 2010		
ZIP Code	Area	Percent
	Prince William County, VA	4.1
	Metropolitan Area	3.9
22026	Dumfries	5.7
22193	Dale City	5.3
22191	Woodbridge	4.7
22172	Triangle	4.6
20111	Manassas And Manassas Park Cities	4.3
20109	Manassas And Manassas Park Cities	3.8
20112	Manassas	3.8
22025	Dumfries	3.7
22192	Woodbridge	3.3
20155	Gainesville	3.1

Data presented for real estate owned (REO) properties compare the relative rate of REO in a ZIP code with the average REO Rate in all ZIP codes. Only areas with more than 500 loans are included in the REO analysis. See the *Foreclosure Monitor Technical Appendix* for details about the indicator.

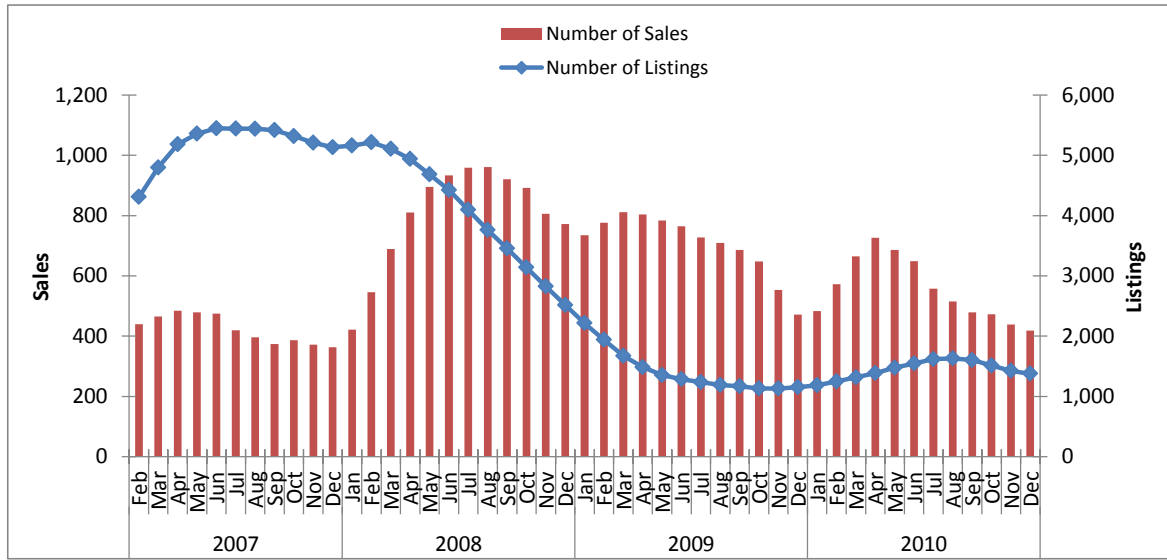
PRINCE WILLIAM COUNTY, VA TOP ZIP CODES BY HIGH/HIGHEST RISK FOR NEW REO December 2010		
ZIP Code	Area	Risk Level
20109	Manassas And Manassas Park Cities	High
20111	Manassas And Manassas Park Cities	High
22193	Dale City	High
22191	Woodbridge	High
22026	Dumfries	High
22192	Woodbridge	High
22025	Dumfries	High
20155	Gainesville	Moderate
20136	Bristow	Moderate
20169	Haymarket	Moderate

#### Key Sales Market Indicators, Prince William County, VA

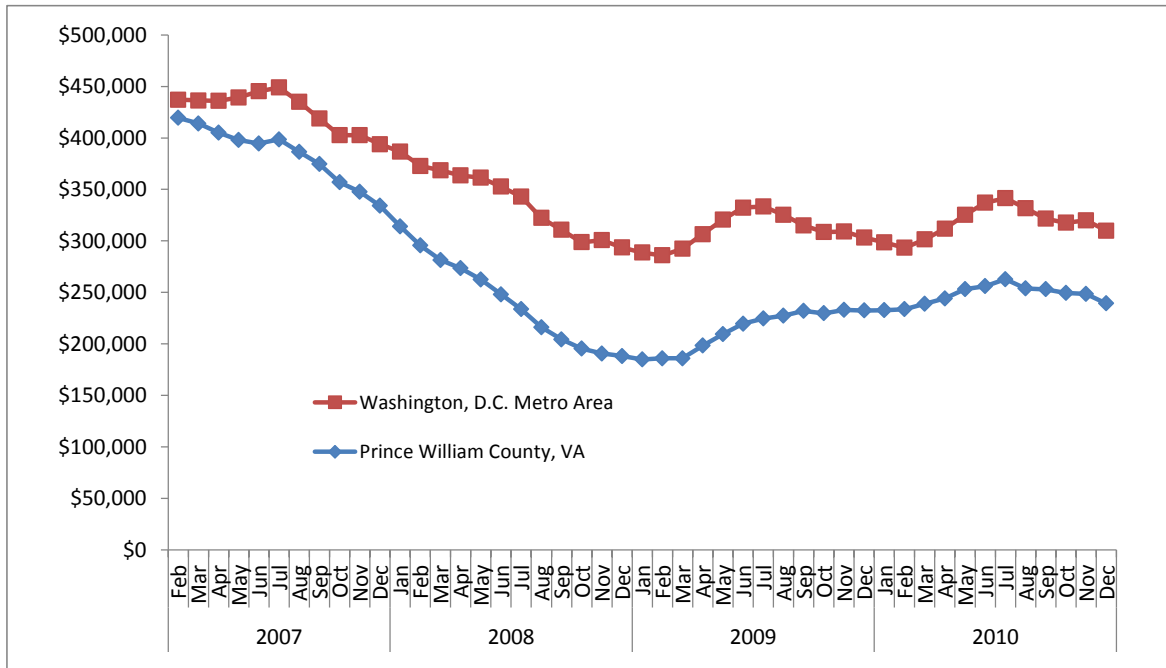
	December				Percent Change (%)		
	2000	2007	2009	2010	2000-10	2007-10	2009-10
Number of Sales							
County	485	394	566	493	1.6	25.1	-12.9
Metro Area	6,582	4,209	5,472	5,220	-20.7	24.0	-4.6
Median Sales Price							
County	\$187,429	\$341,672	\$239,689	\$239,000	27.5	-30.0	-0.3
Metro Area	\$232,448	\$407,165	\$314,677	\$317,383	36.5	-22.1	0.9
Number of New Listings							
County	329	1,089	591	452	37.4	-58.5	-23.5
Metro Area	4,780	7,085	5,611	5,188	8.5	-26.8	-7.5
Number of Listings							
County	808	5,169	1,114	1,383	71.2	-73.2	24.1
Metro Area	12,709	39,683	20,483	22,350	75.9	-43.7	9.1
Months of Inventory							
County	2.6	14.3	5.2	5.1	100.8	-64.1	-1.0
Metro Area	3.1	10.4	6.1	6.2	102.2	-40.5	2.0

Note: Sales data included in the table above and following charts are for single-family homes and condominium units.

**Sales Market Activity: Three-Month Averages, Prince William County, VA**



**Adjusted Median Sales Price: Three-Month Averages, Prince William County, VA and Metro Area**  
 Prices in December 2010 dollars



This publication was funded through a grant from Fannie Mae. Electronic versions of the Foreclosure Monitor and its Technical Appendix are available online at [www.mwcog.org](http://www.mwcog.org) and [www.NeighborhoodInfoDC.org](http://www.NeighborhoodInfoDC.org). To learn more about foreclosure prevention activities in the region, visit the Capital Area Foreclosure Network (CAFN) at [www.CAFN.org](http://www.CAFN.org).

*The views expressed are those of the authors and should not be attributed to the Urban Institute, Metropolitan Washington Council of Governments, Fannie Mae, their trustees, or their funders.*