



Washington, D.C. Metropolitan Area Foreclosure Monitor: County Profiles



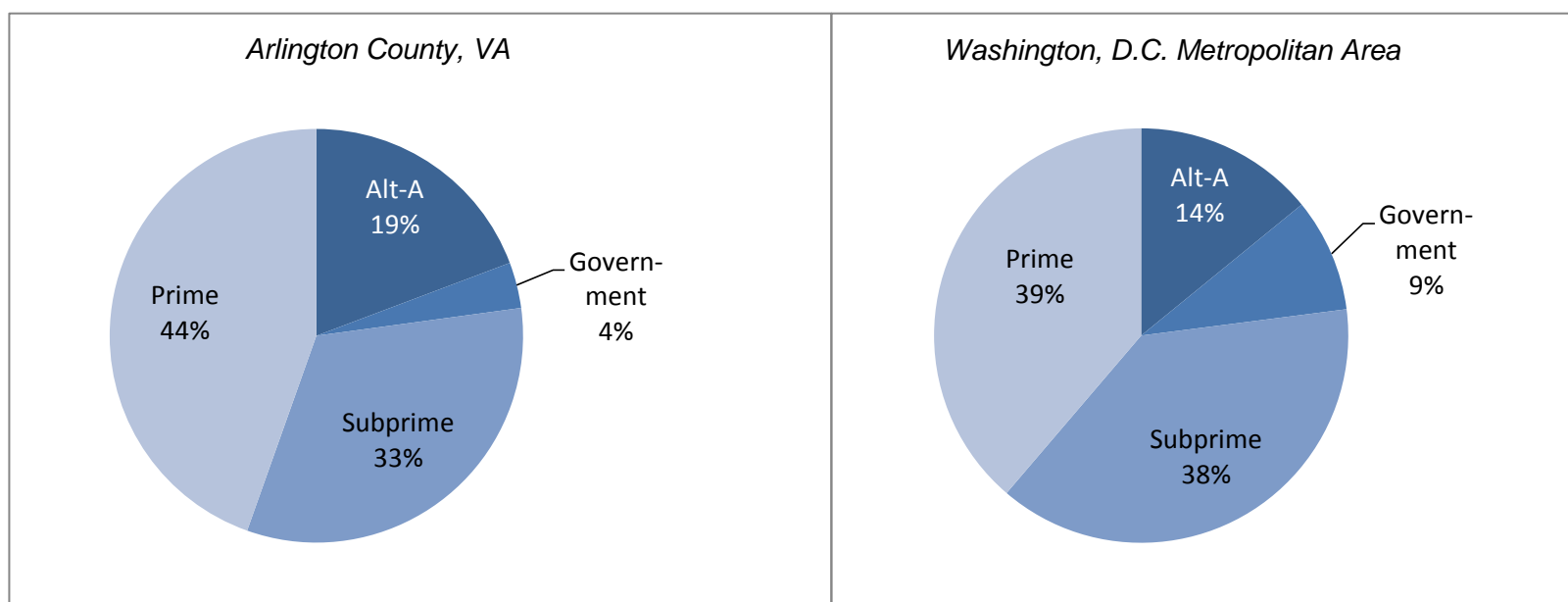
Arlington County, VA March 2011

Key Mortgage Performance Indicators

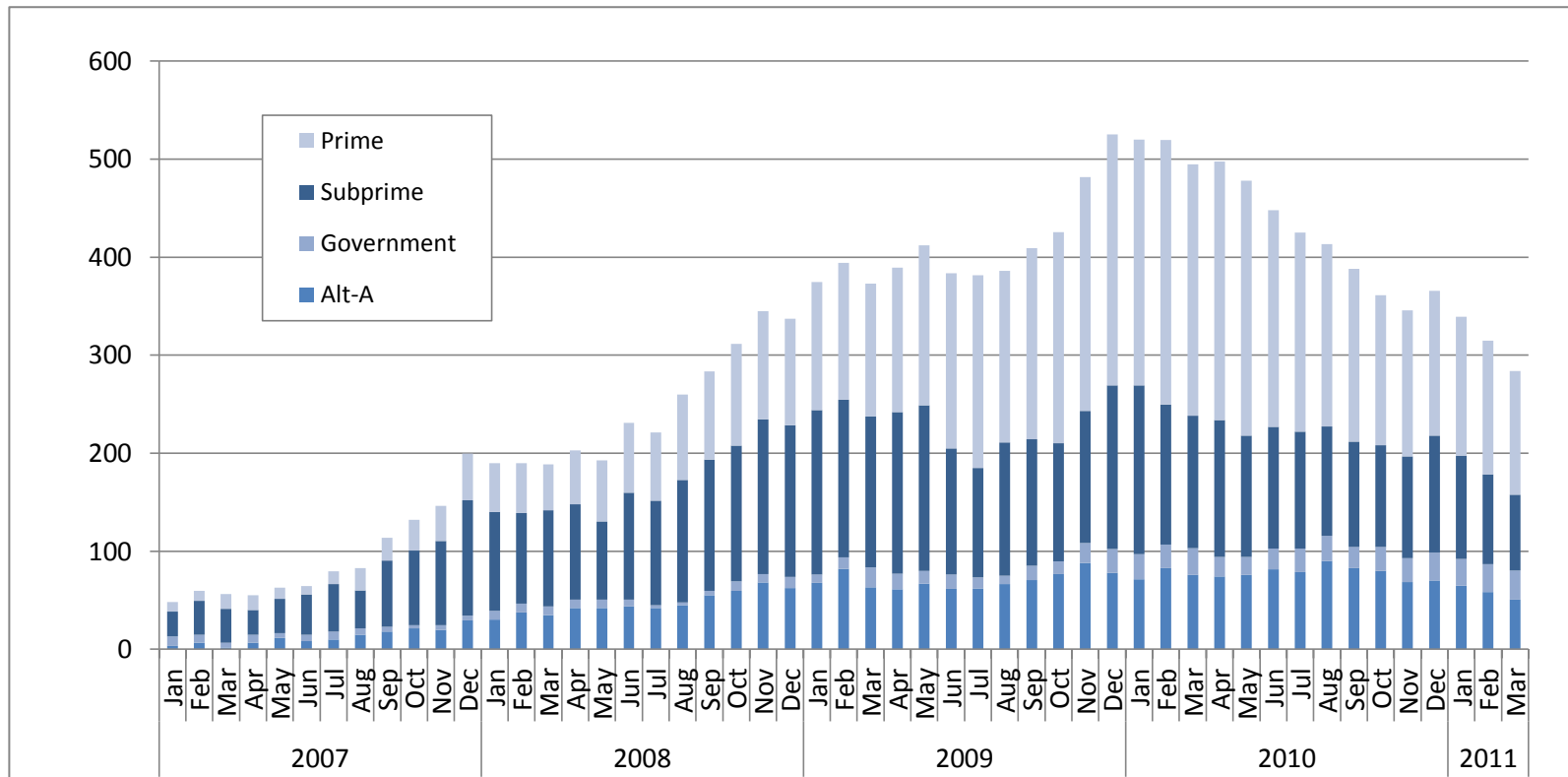
March 2011	Arlington County, VA	Washington, D.C. Metropolitan Area
Foreclosure Inventory		
Number of Loans	300	31,700
Percent of Loans	0.8	2.6
Mortgages 30 or More Days Delinquent		
Number of Loans	700	82,000
Percent of Loans	1.6	6.8
Pct. Point Change Since 3/2010	-0.7	-1.7
Pct. Point Change Since 3/2009	-0.5	-0.7
Mortgages 90 or More Days Delinquent		
Number of Loans	300	43,700
Percent of Loans	0.7	3.6
Pct. Point Change Since 3/2010	-0.5	-1.3
Pct. Point Change Since 3/2009	-0.2	0.1
ZIP Codes with High/Highest Risk for New REO		
Number of ZIP Codes	0	93
Percent of ZIP Codes	0.0	39.9

Note: Number of loans rounded to the nearest hundred

Foreclosure Inventory by Loan Grade, March 2011



Number of First-lien Mortgages 90 or More Days Delinquent, Arlington County, VA



Seriously delinquent mortgages are those that are 90 days or more past due and not in the foreclosure inventory. Only areas with more than 500 loans are included in the delinquency analysis. See the *Foreclosure Monitor Technical Appendix* for details about the indicator.

ARLINGTON COUNTY, VA TOP ZIP CODES BY SERIOUS DELINQUENCY RATE March 2011		
ZIP Code	Area	Percent
	<i>Arlington County, VA</i>	0.7
	<i>Metropolitan Area</i>	3.6
22204	Arlington	1.6
22206	Arlington	0.8
22203	Arlington	0.7
22202	Arlington	0.5
22209	Arlington	0.3
22207	Arlington	0.3
22213	Arlington	0.3
22205	Arlington	0.3
22201	Arlington	0.2

Data presented for real estate owned (REO) properties compare the relative rate of REO in a ZIP code with the average REO Rate in all ZIP codes. Only areas with more than 500 loans are included in the REO analysis. See the *Foreclosure Monitor Technical Appendix* for details about the indicator.

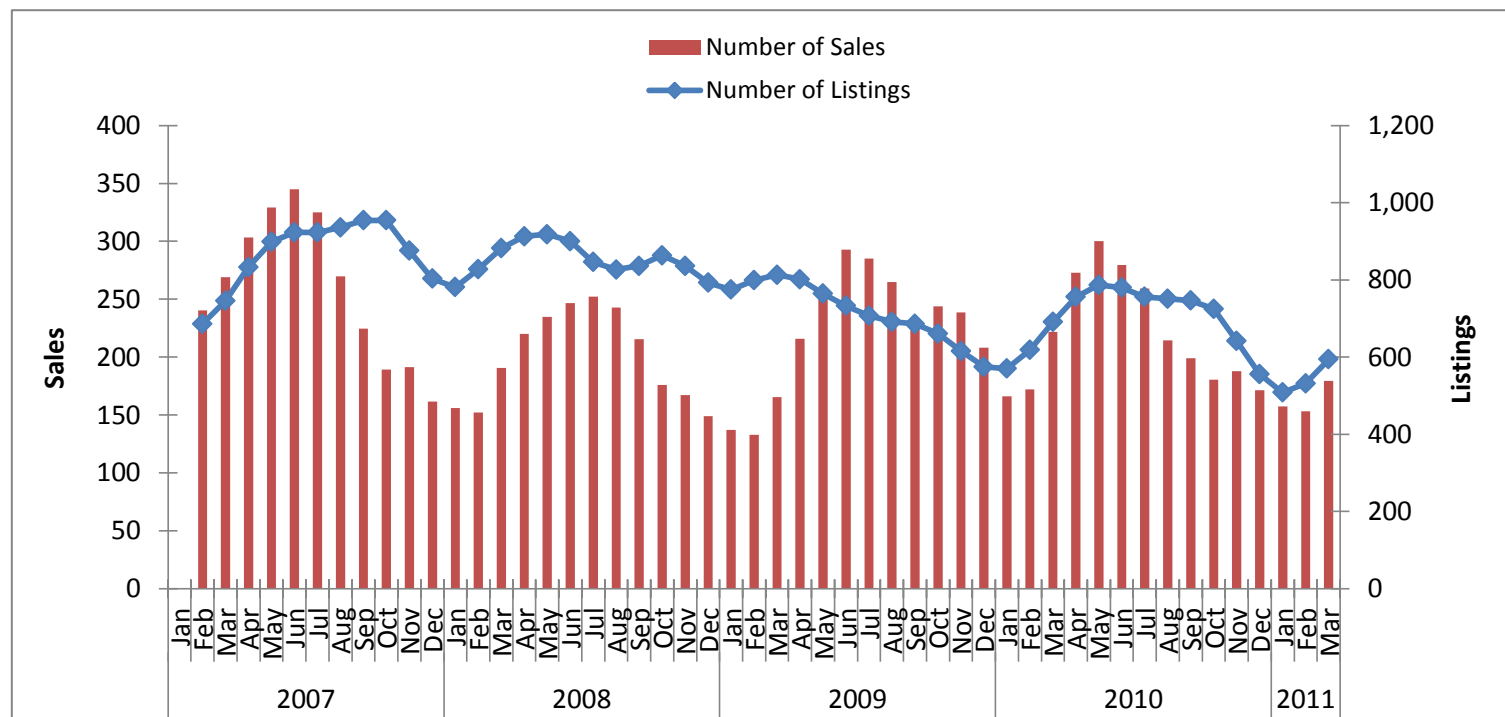
ARLINGTON COUNTY, VA TOP ZIP CODES BY HIGH/HIGHEST RISK FOR NEW REO March 2011		
ZIP Code	Area	Risk Level
22204	Arlington	Minimal
22209	Arlington	Minimal
22206	Arlington	Minimal
22202	Arlington	Minimal
22203	Arlington	Minimal
22213	Arlington	Minimal
22201	Arlington	Minimal
22205	Arlington	Minimal
22207	Arlington	Minimal

Key Sales Market Indicators, Arlington County, VA

	March				Percent Change (%)		
	2000	2007	2010	2011	2000-11	2007-11	2010-11
Number of Sales							
County	238	289	236	194	-18.5	-32.9	-17.8
Metro Area	5,990	6,344	5,871	5,247	-12.4	-17.3	-10.6
Median Sales Price							
County	\$283,766	\$520,695	\$445,128	\$467,500	64.7	-10.2	5.0
Metro Area	\$218,865	\$450,386	\$307,135	\$297,764	36.0	-33.9	-3.1
Number of New Listings							
County	256	491	462	381	48.8	-22.4	-17.5
Metro Area	9,074	15,544	12,333	10,762	18.6	-30.8	-12.7
Number of Listings							
County	272	747	685	585	115.1	-21.7	-14.6
Metro Area	16,548	34,516	22,754	22,767	37.6	-34.0	0.1
Months of Inventory							
County	2.5	3.9	4.8	4.9	93.9	24.5	1.7
Metro Area	4.7	6.8	6.7	7.0	48.4	3.0	3.5

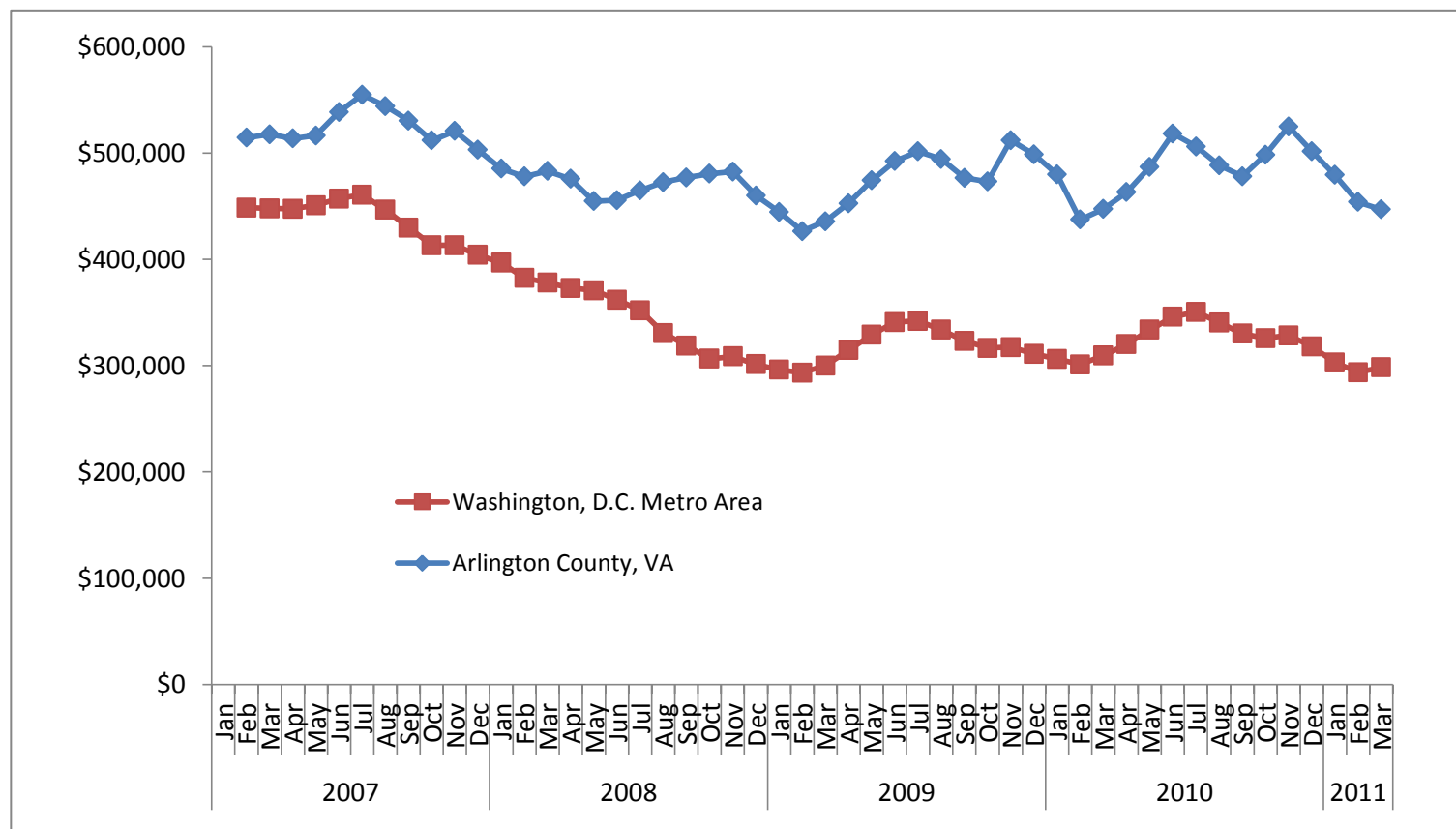
Note: Sales data included in the table above and following charts are for single-family homes and condominium units.

Sales Market Activity: Three-Month Averages, Arlington County, VA



Adjusted Median Sales Price: Three-Month Averages, Arlington County, VA and Metro Area

Prices in March 2011 dollars



This publication was funded through a grant from Fannie Mae. Electronic versions of the Foreclosure Monitor and its Technical Appendix are available online at www.mwcog.org and www.NeighborhoodInfoDC.org. To learn more about foreclosure prevention activities in the region, visit the Capital Area Foreclosure Network (CAFN) at www.CAFN.org.

The views expressed are those of the authors and should not be attributed to the Urban Institute, Metropolitan Washington Council of Governments, Fannie Mae, their trustees, or their funders.