



Washington, D.C. Metropolitan Area Foreclosure Monitor: County Profiles



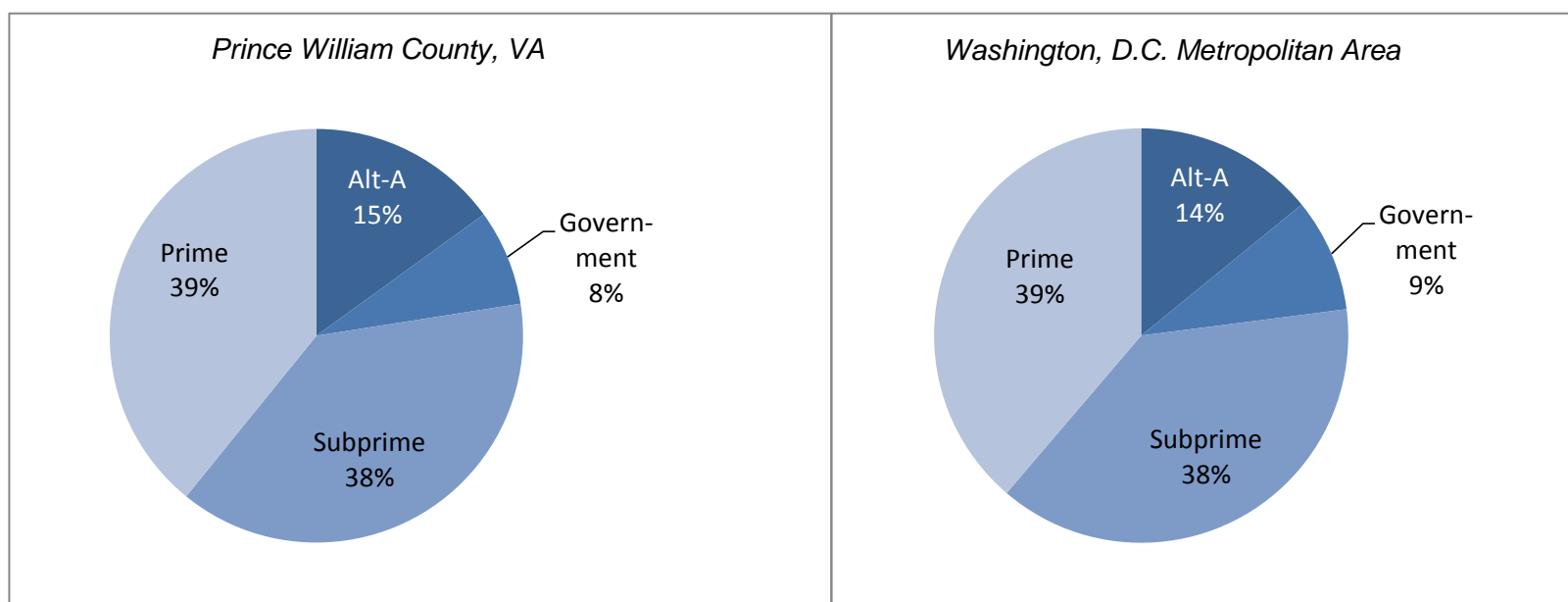
Prince William County, VA March 2011

Key Mortgage Performance Indicators

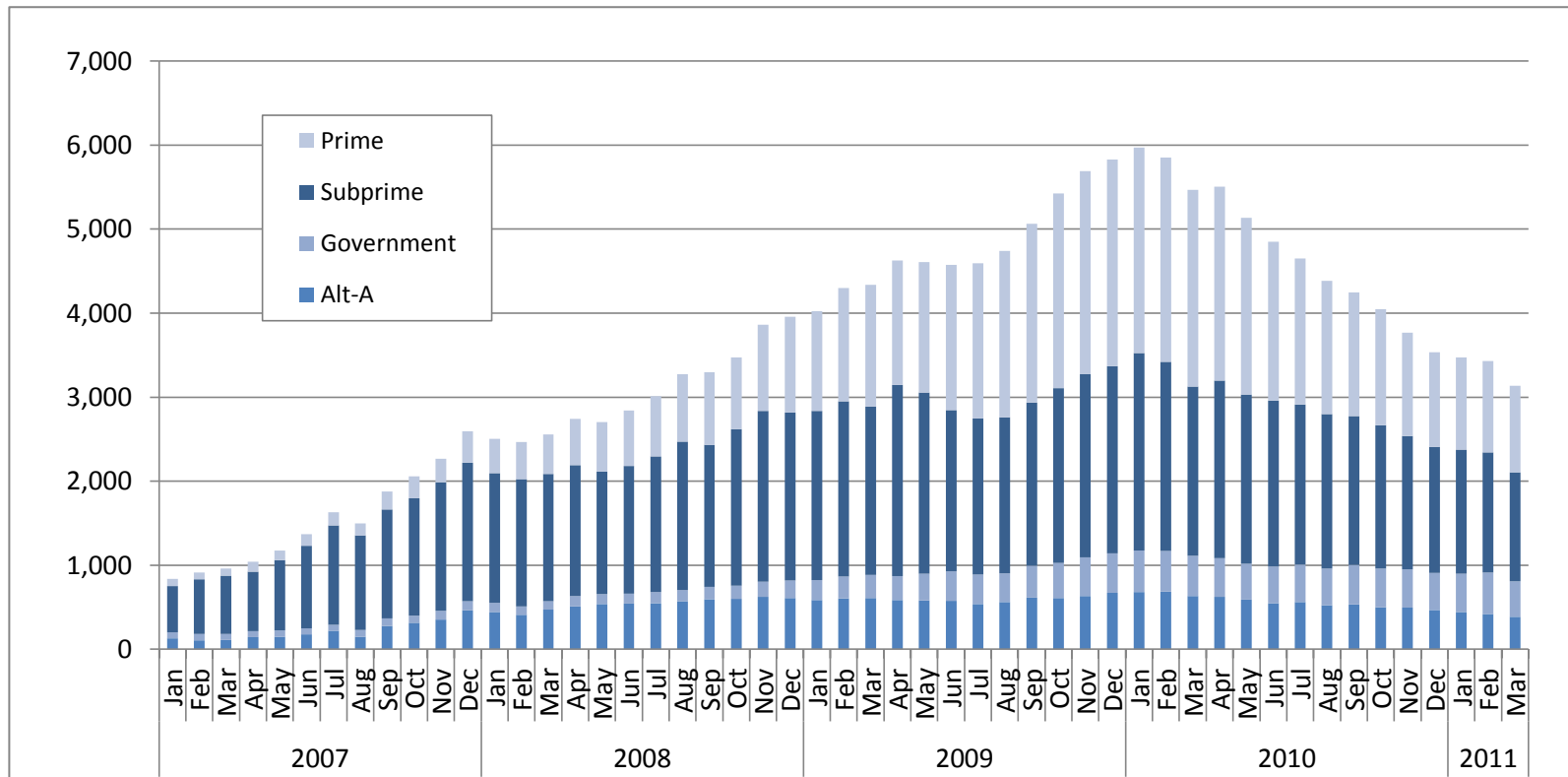
March 2011	Prince William County, VA	Washington, D.C. Metropolitan Area
Foreclosure Inventory		
Number of Loans	2,400	31,700
Percent of Loans	2.7	2.6
Mortgages 30 or More Days Delinquent		
Number of Loans	6,300	82,000
Percent of Loans	7.2	6.8
Pct. Point Change Since 3/2010	-3.3	-1.7
Pct. Point Change Since 3/2009	-2.6	-0.7
Mortgages 90 or More Days Delinquent		
Number of Loans	3,100	43,700
Percent of Loans	3.6	3.6
Pct. Point Change Since 3/2010	-2.7	-1.3
Pct. Point Change Since 3/2009	-1.4	0.1
ZIP Codes with High/Highest Risk for New REO		
Number of ZIP Codes	7	93
Percent of ZIP Codes	53.8	39.9

Note: Number of loans rounded to the nearest hundred

Foreclosure Inventory by Loan Grade, March 2011



Number of First-lien Mortgages 90 or More Days Delinquent, Prince William County, VA



Seriously delinquent mortgages are those that are 90 days or more past due and not in the foreclosure inventory. Only areas with more than 500 loans are included in the delinquency analysis. See the *Foreclosure Monitor Technical Appendix* for details about the indicator.

PRINCE WILLIAM COUNTY, VA TOP ZIP CODES BY SERIOUS DELINQUENCY RATE March 2011		
ZIP Code	Area	Percent
	Prince William County, VA	3.6
	Metropolitan Area	3.6
22193	Dale City	4.8
22172	Triangle	4.6
22026	Dumfries	4.5
22191	Woodbridge	4.3
20111	Manassas And Manassas Park Cities	3.6
20109	Manassas And Manassas Park Cities	3.6
22025	Dumfries	3.1
22192	Woodbridge	3.1
20155	Gainesville	2.9
20112	Manassas	2.9

Data presented for real estate owned (REO) properties compare the relative rate of REO in a ZIP code with the average REO Rate in all ZIP codes. Only areas with more than 500 loans are included in the REO analysis. See the *Foreclosure Monitor Technical Appendix* for details about the indicator.

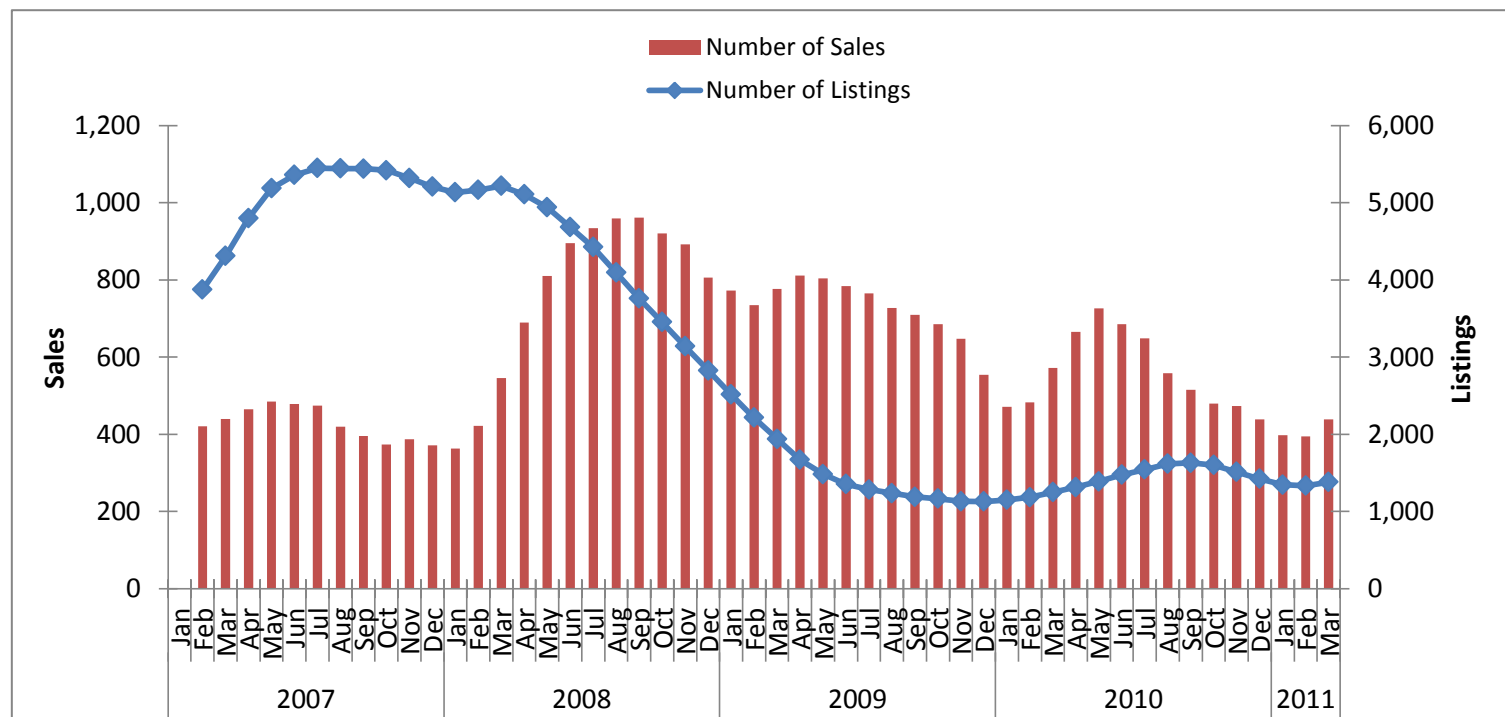
PRINCE WILLIAM COUNTY, VA TOP ZIP CODES BY HIGH/HIGHEST RISK FOR NEW REO March 2011		
ZIP Code	Area	Risk Level
20109	Manassas And Manassas Park Cities	High
22026	Dumfries	High
22193	Dale City	High
22172	Triangle	High
20111	Manassas And Manassas Park Cities	High
22191	Woodbridge	High
22192	Woodbridge	High
20136	Bristow	Moderate
20155	Gainesville	Moderate
20181	Nokesville	Moderate

Key Sales Market Indicators, Prince William County, VA

	March				Percent Change (%)			
	2000	2007	2010	2011	2000-11	2007-11	2010-11	
Number of Sales								
County	482	461	600	484	0.4	5.0	-19.3	
Metro Area	5,990	6,344	5,871	5,247	-12.4	-17.3	-10.6	
Median Sales Price								
County	\$169,017	\$437,698	\$248,551	\$225,000	33.1	-48.6	-9.5	
Metro Area	\$218,865	\$450,386	\$307,135	\$297,764	36.0	-33.9	-3.1	
Number of New Listings								
County	642	1,788	986	874	36.1	-51.1	-11.4	
Metro Area	9,074	15,544	12,333	10,762	18.6	-30.8	-12.7	
Number of Listings								
County	1,144	4,320	1,214	1,344	17.5	-68.9	10.7	
Metro Area	16,548	34,516	22,754	22,767	37.6	-34.0	0.1	
Months of Inventory								
County	4.1	10.7	5.6	5.7	40.4	-46.2	2.3	
Metro Area	4.7	6.8	6.7	7.0	48.4	3.0	3.5	

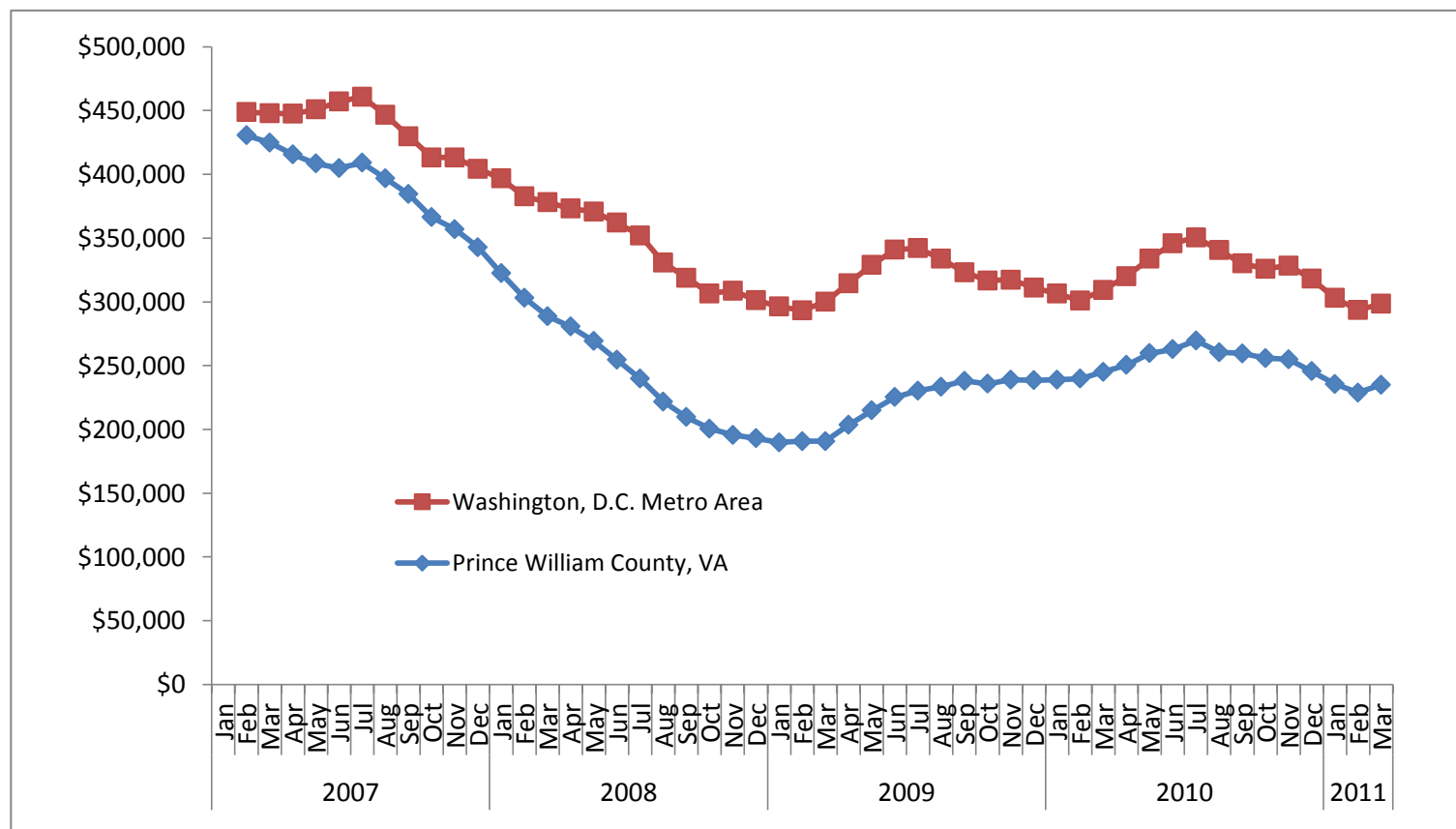
Note: Sales data included in the table above and following charts are for single-family homes and condominium units.

Sales Market Activity: Three-Month Averages, Prince William County, VA



Adjusted Median Sales Price: Three-Month Averages, Prince William County, VA and Metro Area

Prices in March 2011 dollars



This publication was funded through a grant from Fannie Mae. Electronic versions of the Foreclosure Monitor and its Technical Appendix are available online at www.mwcog.org and www.NeighborhoodInfoDC.org. To learn more about foreclosure prevention activities in the region, visit the Capital Area Foreclosure Network (CAFN) at www.CAFN.org.

The views expressed are those of the authors and should not be attributed to the Urban Institute, Metropolitan Washington Council of Governments, Fannie Mae, their trustees, or their funders.